

1. NW 114th Ave and 42nd terrace (west side of 114th Ave)
 - a. Drainage Top Structural Repairs



2. NW 114th Ave & 44th street (West side of 114th Avenue)
 - a. 20LF of "F-Curb"



3. NW 114th Ave & 47th street (west side of 114th Ave)
 - a. 10LF of "F-Curb"



4. NW 114th Avenue & 51st terrace
 - a. Storm Drain M/H Cover Adjustment



5) 8333 NW 53rd Terrace

b. Storm Drain M/H Cover Adjustment



6) NW 112th Avenue & 90th street (SE Corner)

a. Storm Drain M/H Cover Adjustment



7) NW 86th street and approximately 50' east of NW 109th Path

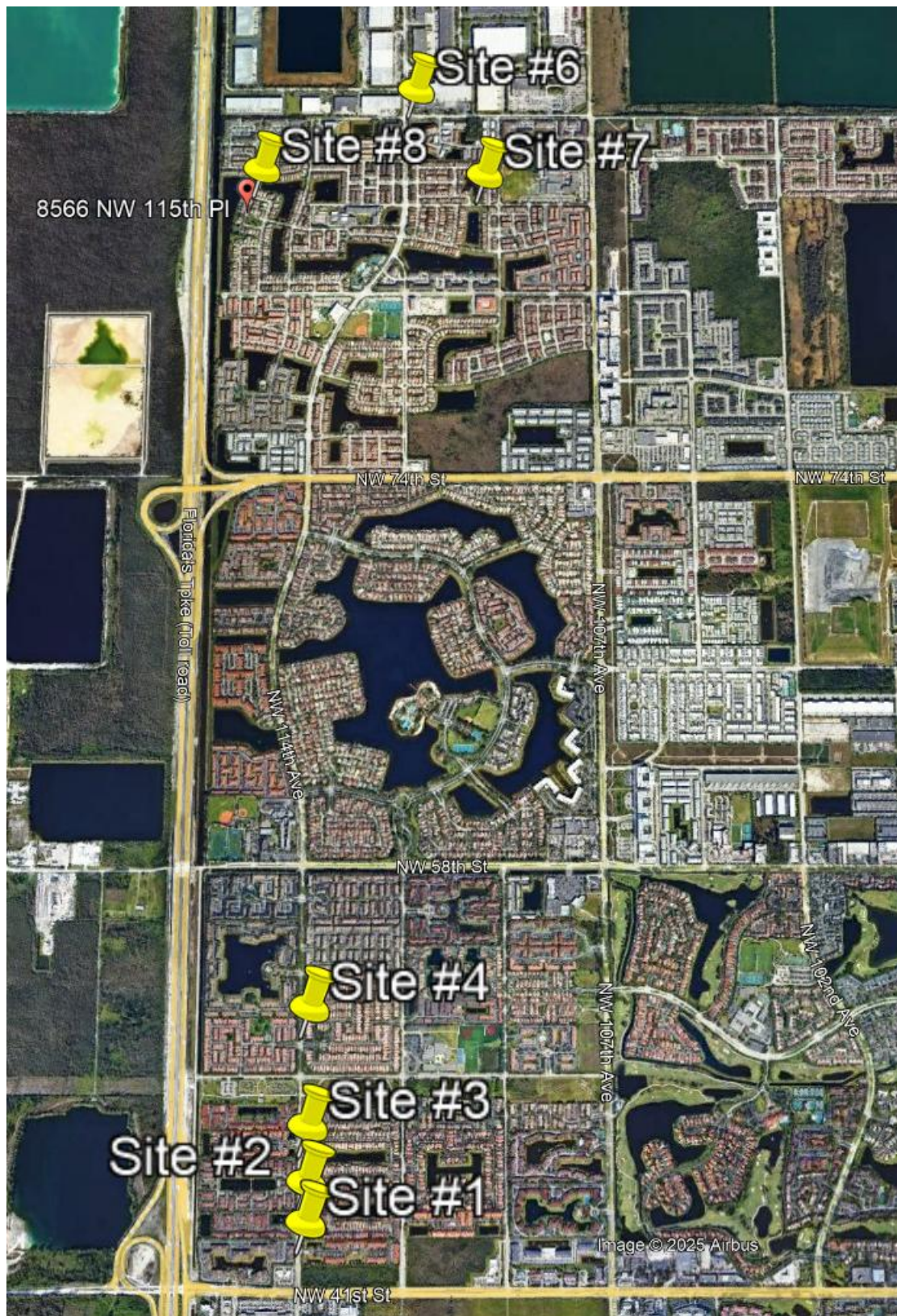
- Storm Drain M/H Cover Adjustment

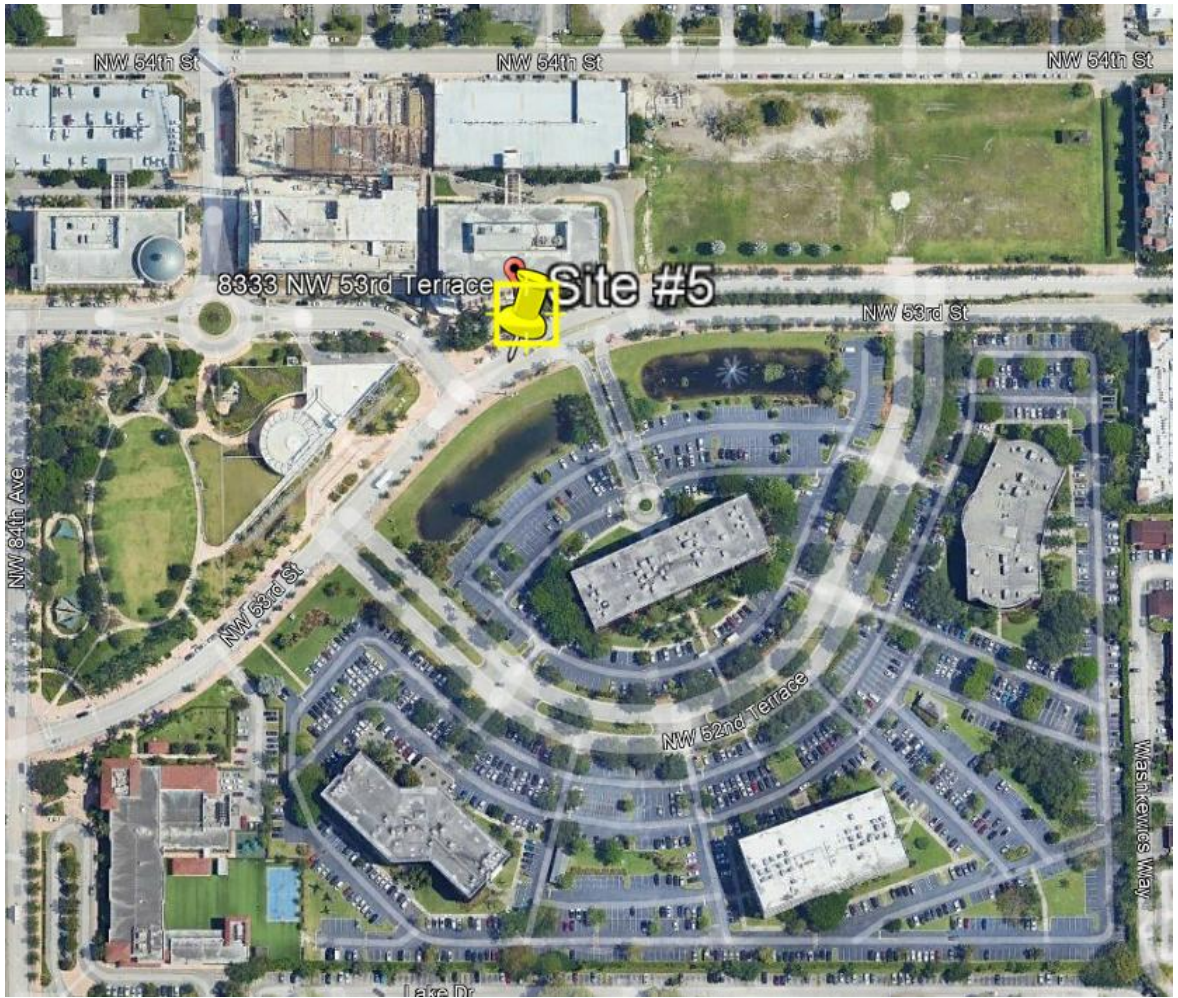


8) 8566 NW 115th Avenue

- Storm Drain M/H Cover Adjustment







9) NW 82nd Street between 112th Ave and 113th court (north side)







10) NW 82nd street & 114th path



11) 82nd street between 107 & 108th Avenue (north side)

- Sidewalk 10' X 6'

