



SECTION 8 TRAFFIC CALMING STUDY



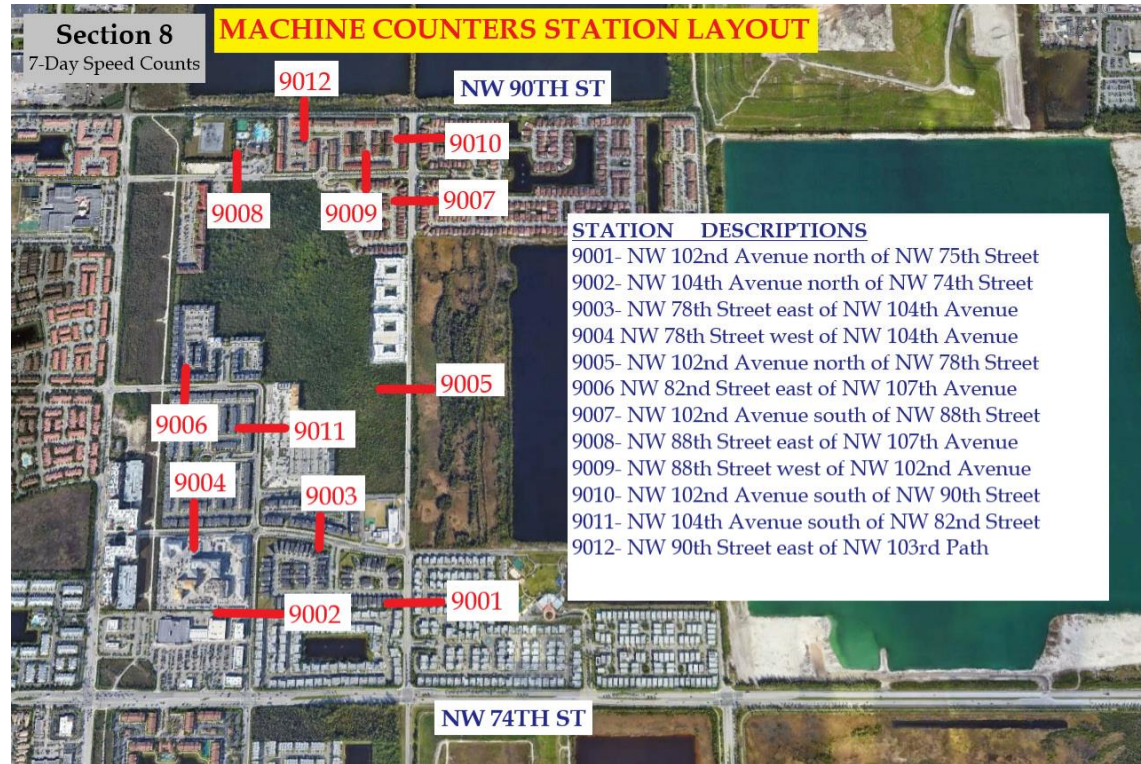
INTRODUCTION

- **Final Public Outreach Meeting- 10/04/22**
- Review of Project Intent/Scope
- Summary of Results of Traffic Data Analysis
- Proposed Traffic Improvement Plan
- Summary of Traffic Calming Program Improvement Estimated Costs
- Resident Feedback on Proposed Traffic Improvement Plan



REVIEW OF PROJECT INTENT

- The intent of the Section 8 Traffic Calming Study is to provide recommendations of traffic calming devices that will potentially improve speeding concerns and related traffic issues identified by the neighborhood.
- The project limits are the area roadways bound by NW 90th Street to the north, NW 102nd Avenue on the east, NW 107th Avenue to the west and NW 74th Street on the south.



TRAFFIC CALMING STUDY SCOPE

- Task 1: Initial Public Outreach Kickoff Meeting
- Task 2: Traffic Data Collection
- Task 3: Traffic Analysis
- Task 4: Traffic Calming Improvement Plan
- **Task 5: Final Public Outreach Meeting and Presentation**
- Task 6: Traffic Calming Technical Memorandum
- Task 7: Intergovernmental Agency Coordination and Revisions



CONTEXT SENSITIVE CHARACTERISTICS- SPEED LIMIT

Miami Dade County PWD- Traffic Engineering Division Policy on Traffic Calming Devices

- For municipalities with traffic calming funding, 85th percentile speeds exceeding the posted speed limit by 5 mph or more are considered to have an excessive speeding issue.
- The speed threshold that warrants the use of traffic calming devices per Miami Dade County is 85th percentile speeds that are 10 mph or greater than the posted speed limits

Public Works Department – Traffic Engineering Division Policy on Traffic Calming Measures

Must meet the first criteria and at least one of the remaining criteria in order for the Public Works Department to consider traffic calming measures:

Criterion	Residential Local Streets	Residential Collector Streets
Minimum Traffic Volume	>1,500 VPD <3000**	>3,000 VPD <8,000**
	>150 VPH <300**	>300 VPH <800
85th Percentile Speed+	10 MPH> Speed Limit	10 MPH> Speed Limit
Correctable Accidents per year	>3 per year	>6 per year
Cut Through Traffic during the a.m. or p.m. peak hour	>25%	>50%
Pedestrian Crossing Volume during the a.m. or p.m. peak hour	>25	>50
Concurrence from affected residents/property owners.*	2/3 of returned ballots**	2/3 of returned ballots **

VPD = Vehicles per day;
VPH = Vehicles per hour

+ It is the speed at which 85% of motorists travel.
* Affected residents/property owners to be determined on a case by case basis.

** For traffic circle 100% concurrence from adjacent affected residents and or property owners is required.
Municipal Jurisdictions: In lieu of concurrence a resolution is acceptable from municipalities.

*** The traffic volume within a municipal boundary could be reduced by a total of 30%, and speed by 50% at the request of and for those municipalities, which provide funding for their traffic calming program.

T:\Citizen Support\Traffic Flow Modification - Street Closure.doc



SUMMARY OF RESULTS OF TRAFFIC DATA ANALYSIS

- For residential local streets, traffic volumes should not exceed 1,050 vehicles per day or 105 vehicles in the peak hour
- For residential collector streets, traffic volumes should not exceed 2,100 vehicles per day or 210 vehicles in the peak hour (30% reduction was applied as the City of Doral provides funding for its traffic calming program).

TUBE COUNT LOCATION	ROADWAY	ROADWAY CLASSIFICATION	PEAK SEASON DAILY VOLUME	EXCEEDS LIVABILITY THRESHOLD**	PEAK HOUR TWO-WAY TRAFFIC VOLUME	EXCEEDS LIVABILITY THRESHOLD
9001	NW 102nd Avenue north of NW 75th Street	Collector	10,018	Yes	902	Yes
9002	NW 104th Avenue north of NW 74th Street	Local Street	7,253	Yes	646	Yes
9003	NW 78th Street east of NW 104th Avenue	Local Street	3,324	Yes	394	Yes
9004	NW 78th Street west of NW 104th Avenue	Local Street	3,214	Yes	324	Yes
9005	NW 102nd Avenue north of NW 78th Street	Collector	9,193	Yes	799	Yes
9006	NW 82nd Street east of NW 107th Avenue	Local Street	2,220	Yes	247	Yes
9007	NW 102nd Avenue south of NW 88th Street	Collector	6,899	Yes	705	Yes
9008	NW 88th Street east of NW 107th Avenue	Local Street	2,674	Yes	287	Yes
9009	NW 88th Street west of NW 102nd Avenue	Local Street	2,468	Yes	256	Yes
9010	NW 102nd Avenue south of NW 90th Street	Collector	3,620	Yes	404	Yes
9011	NW 104th Avenue south of NW 82nd Street	Local Street	2,195	Yes	241	Yes
9012	NW 90th Street east of NW 103rd Path	Local Street	2,533	Yes	270	Yes

*Roadway segments highlighted in Yellow exceeds the livability threshold.

** Livability volume thresholds as per Miami-Dade County Traffic Flow Modifications Street Closures Procedure (Revised January 2009).



SUMMARY OF RESULTS OF TRAFFIC DATA ANALYSIS

- The speed measurements demonstrate that the average speeds traveled by motorists on the residential local streets within the neighborhood are generally between 27 and 35 miles per hour (mph), which in most cases is higher than the posted speed limits of 30 mph.
- An evaluation of the 85th percentile speeds demonstrate that some motorists travel more than the posted speed limit. In general, the 85th percentile speeds of local residential streets exceed the existing posted speed limit by 3 mph to 11 mph.

TUBE COUNT LOCATION	ROADWAY	Posted Speed (mph)	Average Speed (mph)	85th Percentile Speed (mph)	85th Percentile Speed above/below Posted Speed (mph)	Exceeds Speed Threshold ***
9001	NW 102nd Avenue north of NW 75th Street	30	32	38	8	Yes
9002	NW 104th Avenue north of NW 74th Street	30	30	37	7	Yes
9003	NW 78th Street east of NW 104th Avenue	30	31	37	7	Yes
9004	NW 78th Street west of NW 104th Avenue	30	29	35	5	Yes
9005	NW 102nd Avenue north of NW 78th Street	30	35	41	11	Yes
9006	NW 82nd Street east of NW 107th Avenue	30	27	33	3	No
9007	NW 102nd Avenue south of NW 88th Street	30	34	40	10	Yes
9008	NW 88th Street east of NW 107th Avenue	30	33	39	9	Yes
9009	NW 88th Street west of NW 102nd Avenue	30	28	33	3	No
9010	NW 102nd Avenue south of NW 90th Street	30	30	35	5	Yes
9011	NW 104th Avenue south of NW 82nd Street	30	34	40	10	Yes
9012	NW 90th Street east of NW 103rd Path ****	30	32	38	8	Yes

*Roadway segments highlighted in Yellow exceeds the 85th Percentile Speed by 5 mph or more above the posted speed limit.
 ** Roadway segments highlighted in Orange exceeds the 85th Percentile Speed by 10 mph or more above the posted speed limit.
 *** Speed threshold as per Miami-Dade County Traffic Flow Modifications/Street Closures Procedure (Revised January 2009)
 **** Only segments with existing posted speed limit sign of 30 mph. 30 mph speed limit was assumed for the remaining road segments based on City's direction



SUMMARY OF RESULTS OF TRAFFIC DATA ANALYSIS

- Based exclusively on the criteria specified in the Miami-Dade Neighborhood Traffic Management Program, 85th percentile speeds exceed the posted speed limit by 5 mph or more on the following segments (bold segments by 10 mph or more):

- NW 102nd Avenue north of NW 75th Street
- NW 104th Avenue north of NW 74th Street
- NW 78th Street east of NW 104th Avenue
- NW 78th Street west of NW 104th Avenue
- NW 102nd Avenue north of NW 78th Street**
- NW 102nd Avenue south of NW 88th Street**
- NW 88th Street east of NW 107th Avenue
- NW 102nd Avenue south of NW 90th Street
- NW 104th Avenue south of NW 82nd Street**
- NW 90th Street east of NW 103rd Path

TUBE COUNT LOCATION	ROADWAY	Posted Speed (mph)	Average Speed (mph)	85th Percentile Speed (mph)	85th Percentile Speed above/below Posted Speed (mph)	Exceeds Speed Threshold ***
9001	NW 102nd Avenue north of NW 75th Street	30	32	38	8	Yes
9002	NW 104th Avenue north of NW 74th Street	30	30	37	7	Yes
9003	NW 78th Street east of NW 104th Avenue	30	31	37	7	Yes
9004	NW 78th Street west of NW 104th Avenue	30	29	35	5	Yes
9005	NW 102nd Avenue north of NW 78th Street	30	35	41	11	Yes
9006	NW 82nd Street east of NW 107th Avenue	30	27	33	3	No
9007	NW 102nd Avenue south of NW 88th Street	30	34	40	10	Yes
9008	NW 88th Street east of NW 107th Avenue	30	33	39	9	Yes
9009	NW 88th Street west of NW 102nd Avenue	30	28	33	3	No
9010	NW 102nd Avenue south of NW 90th Street	30	30	35	5	Yes
9011	NW 104th Avenue south of NW 82nd Street	30	34	40	10	Yes
9012	NW 90th Street east of NW 103rd Path ****	30	32	38	8	Yes

*Roadway segments highlighted in Yellow exceeds the 85th Percentile Speed by 5 mph or more above the posted speed limit.

** Roadway segments highlighted in Orange exceeds the 85th Percentile Speed by 10 mph or more above the posted speed limit.

*** Speed threshold as per Miami-Dade County Traffic Flow Modifications/Street Closures Procedure (Revised January 2009)

**** Only segments with existing posted speed limit sign of 30 mph. 30 mph speed limit was assumed for the remaining road segments based on City's direction



PROPOSED TRAFFIC IMPROVEMENT PLAN

City of Doral



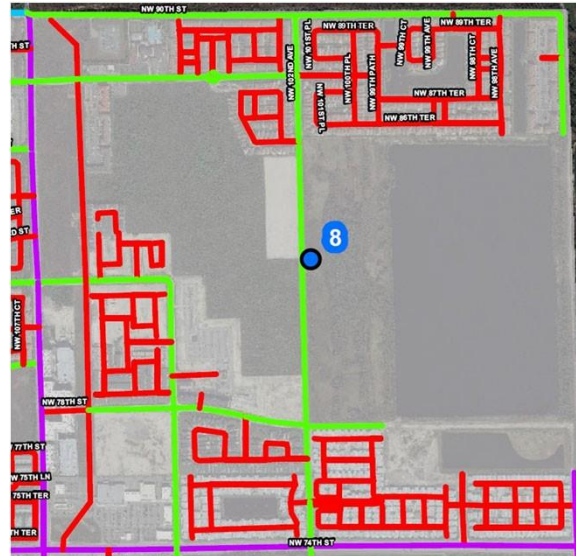
Public Works Department Road Allocation Map

Legend:

- City Sections
- County / City Right-of-Way (0.55 Miles)
- City Right-of-Way (75.19 Miles)
- County Right-of-Way (32.44 Miles)
- Private / City Right-of-Way (125.31 Miles)
- Private Right-of-Way (26.06 Miles)
- State Road (71.02 Miles)

NOTE: For informational purposes only.

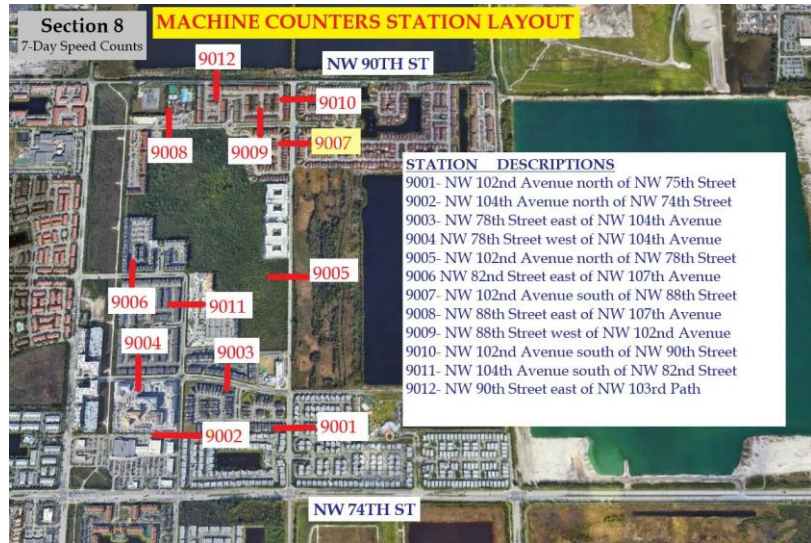
Updated: 11/25/2020



- Installation of 30 mph Speed Limit Signs along each of the Section Eight Neighborhood Streets that are owned and maintained by the City of Doral
- Neighborhood Enforcement by the City of Doral Police Department



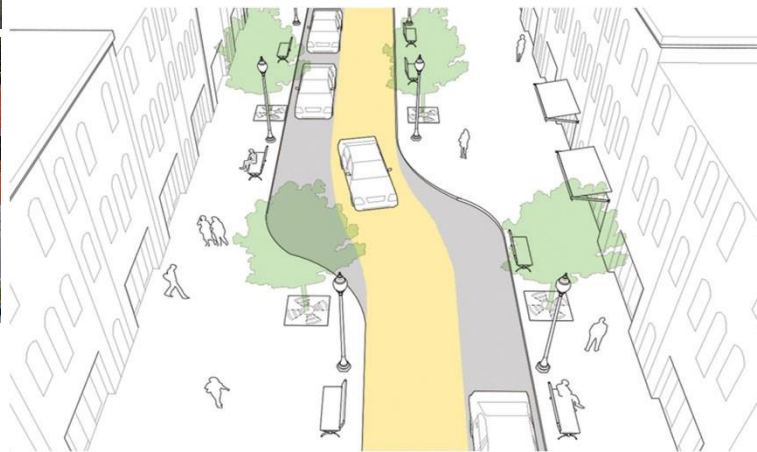
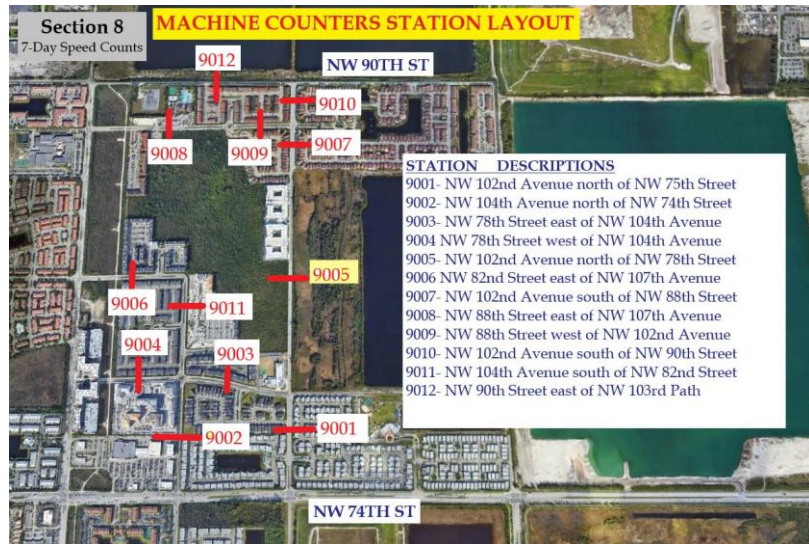
PROPOSED TRAFFIC IMPROVEMENT PLAN



- NW 102nd Avenue and NW 88th Street Intersection
 - 85th Percentile Speed above/below Posted Speed (mph)- 10 mph
 - Proposed Neighborhood Traffic Circle



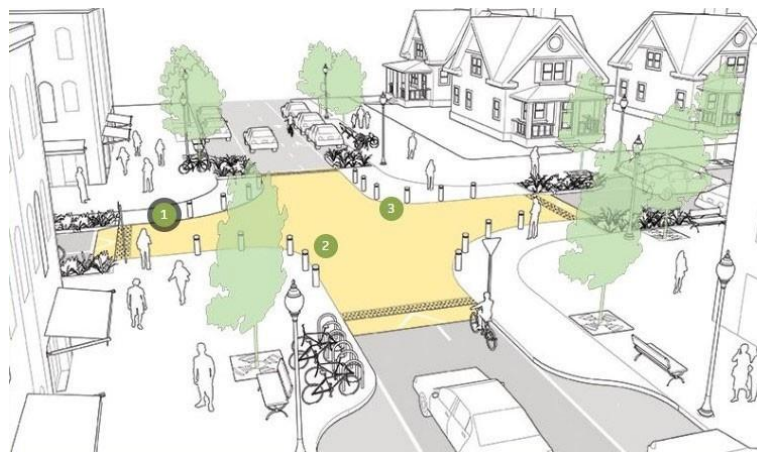
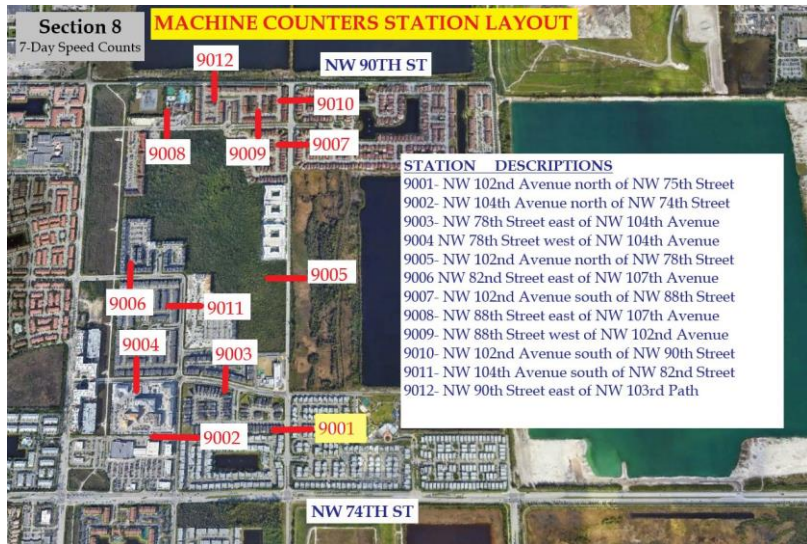
PROPOSED TRAFFIC IMPROVEMENT PLAN



- NW 102nd Avenue between Palmera Apartments and NW 78th Street
 - 85th Percentile Speed above/below Posted Speed (mph)- 11 mph
 - Proposed Diverter and/or Chicane



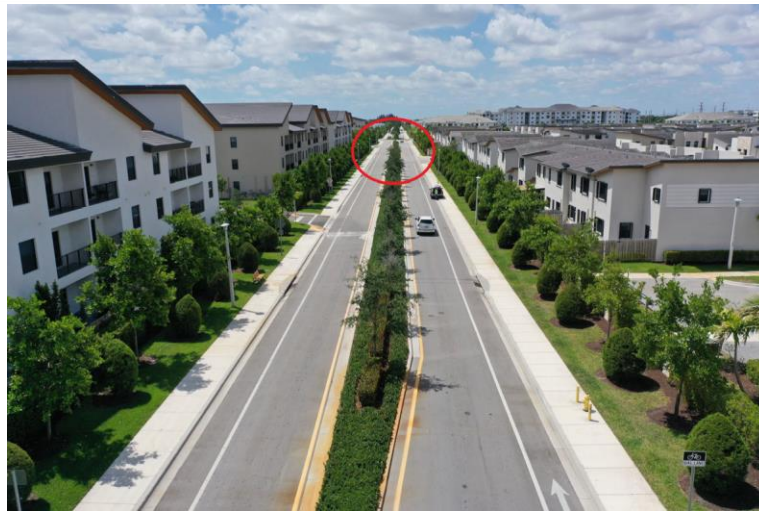
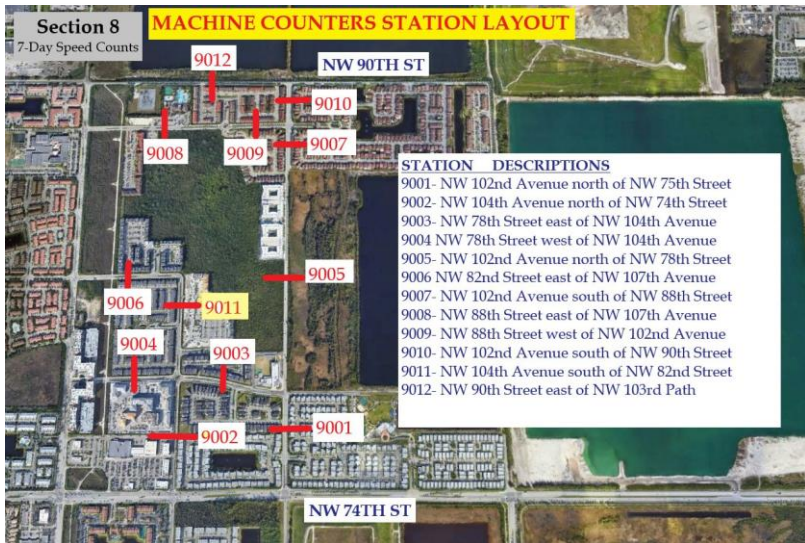
PROPOSED TRAFFIC IMPROVEMENT PLAN



- **NW 102nd Avenue and NW 78th Street Intersection**
 - 85th Percentile Speed above/below Posted Speed (mph)- 8 mph
 - Proposed Raised Intersection



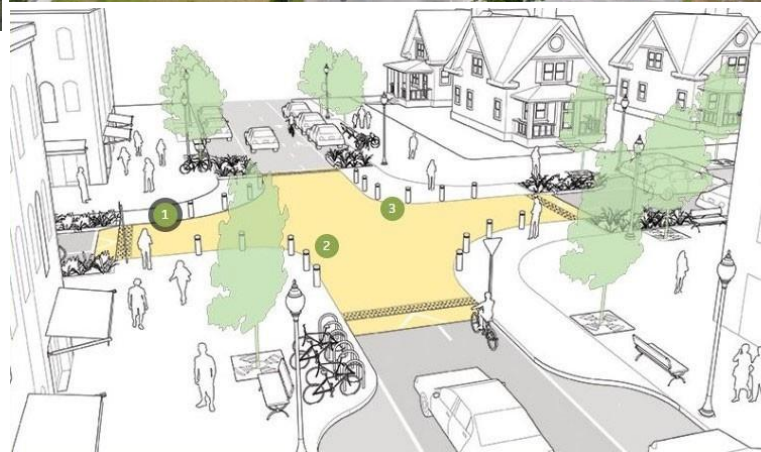
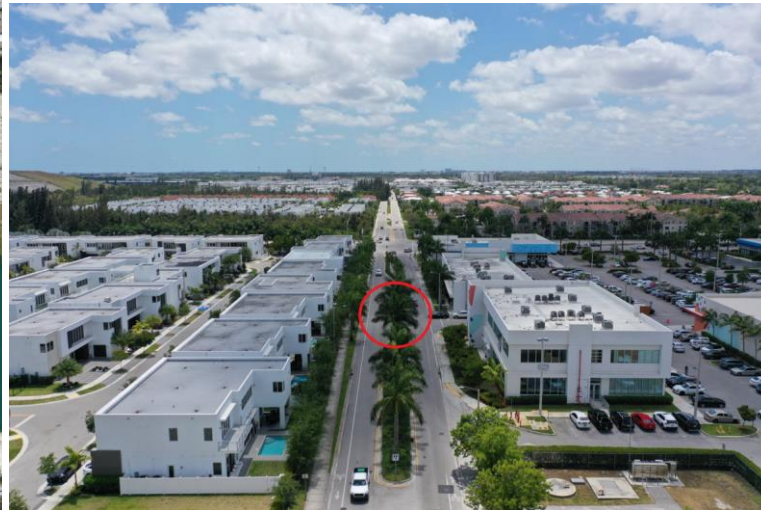
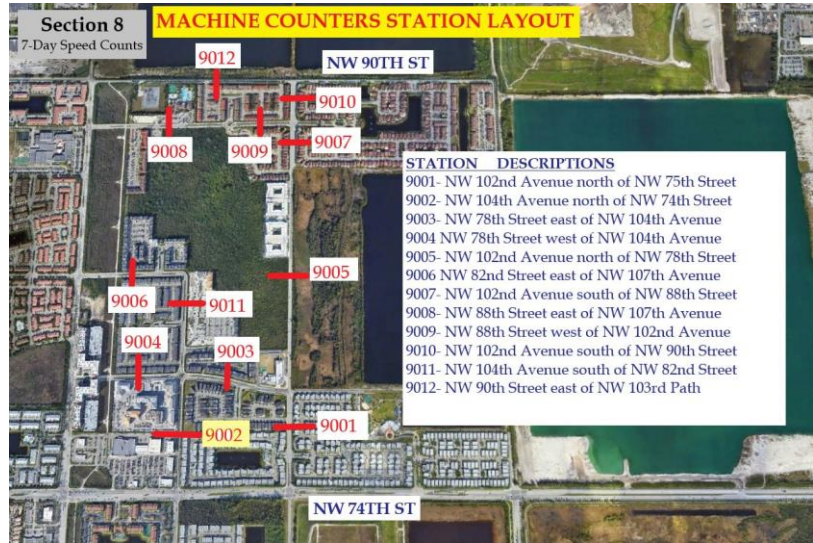
PROPOSED TRAFFIC IMPROVEMENT PLAN



- **NW 104th Avenue and NW 80th Street Intersection**
 - 85th Percentile Speed above/below Posted Speed (mph)- 10 mph
 - Proposed Neighborhood Traffic Circle



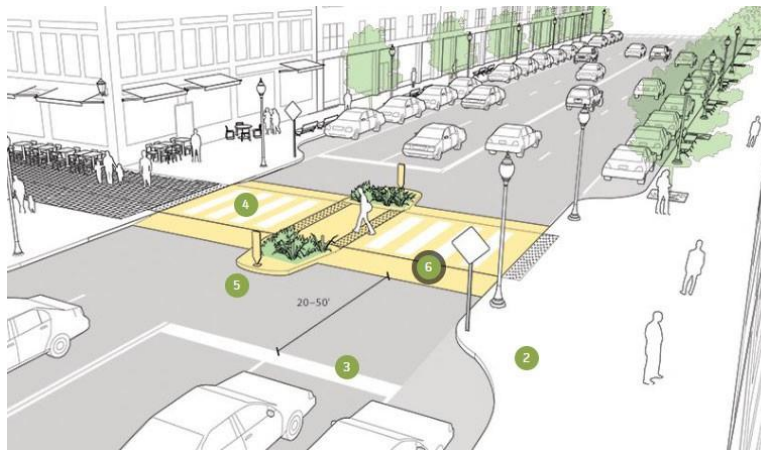
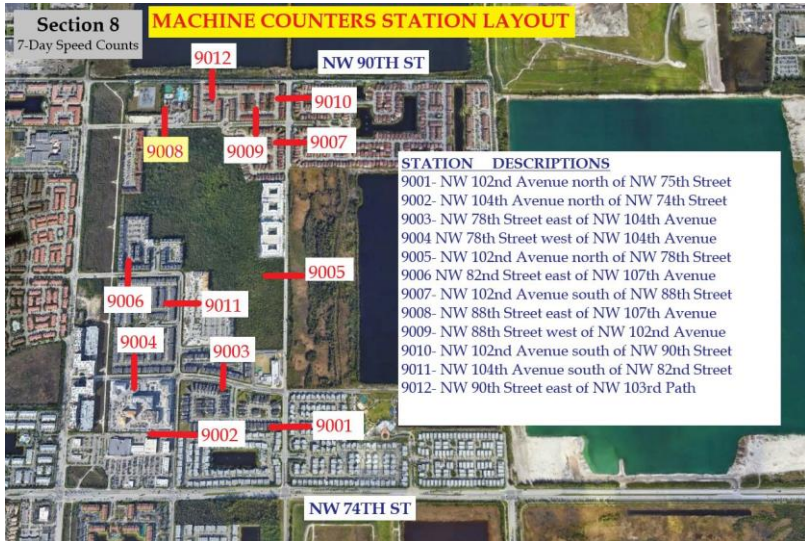
PROPOSED TRAFFIC IMPROVEMENT PLAN



- NW 104th Avenue at the Doral Commons Entrance/Intersection
 - 85th Percentile Speed above/below Posted Speed (mph)- 7 mph
 - Proposed Raised Intersection



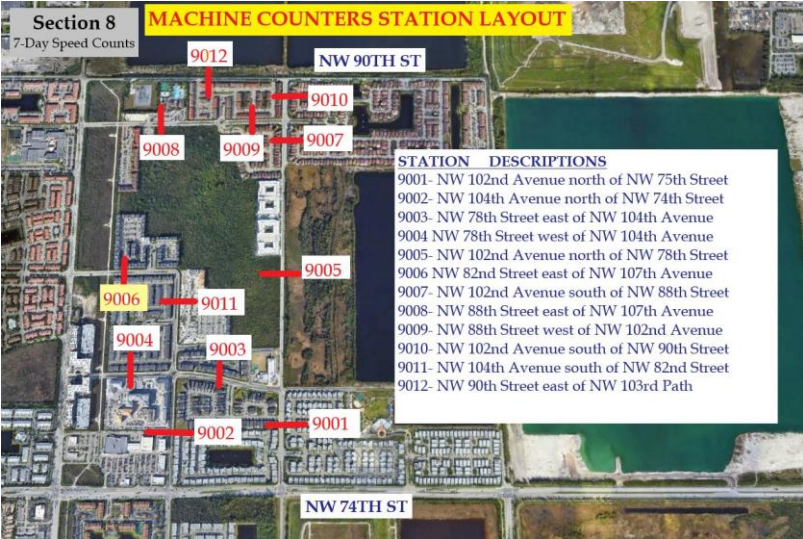
PROPOSED TRAFFIC IMPROVEMENT PLAN



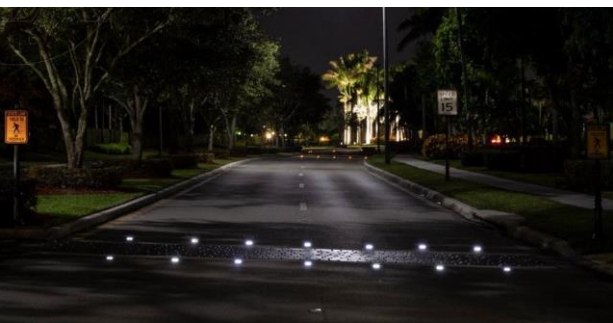
- **NW 88th Street at North South Trail Crossing Intersection**
 - 85th Percentile Speed above/below Posted Speed (mph)- 9 mph
 - Proposed Raised Speed Table at the Marked Crosswalk



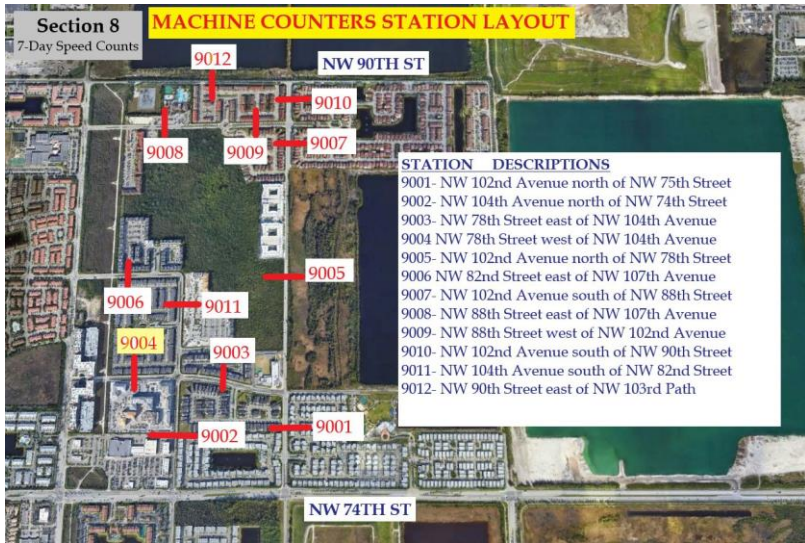
PROPOSED TRAFFIC IMPROVEMENT PLAN



- **NW 82nd Street at North South Trail Crossing Intersection**
 - 85th Percentile Speed above/below Posted Speed (mph)- 3 mph
 - Proposed Enhanced Pedestrian Signage and Markings and Internally Illuminated Raised Pavement Markers
 - A full traffic signal is warranted at the NW 107th Avenue and NW 82nd Street Intersection

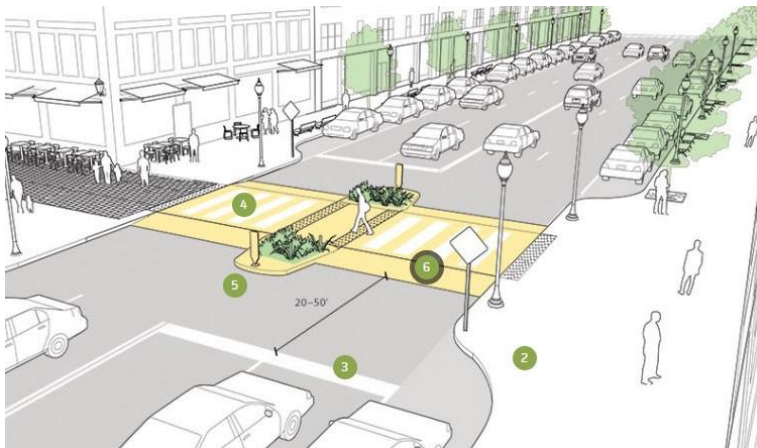


PROPOSED TRAFFIC IMPROVEMENT PLAN

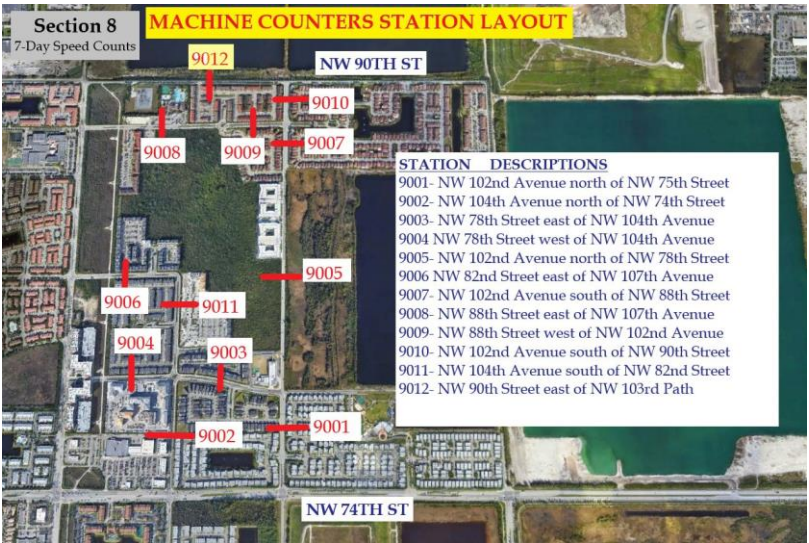


• NW 78th Street at North South Trail Crossing Intersection

- 85th Percentile Speed above/below Posted Speed (mph)- 7 mph
- Proposed Raised Speed Table at the Marked Crosswalk



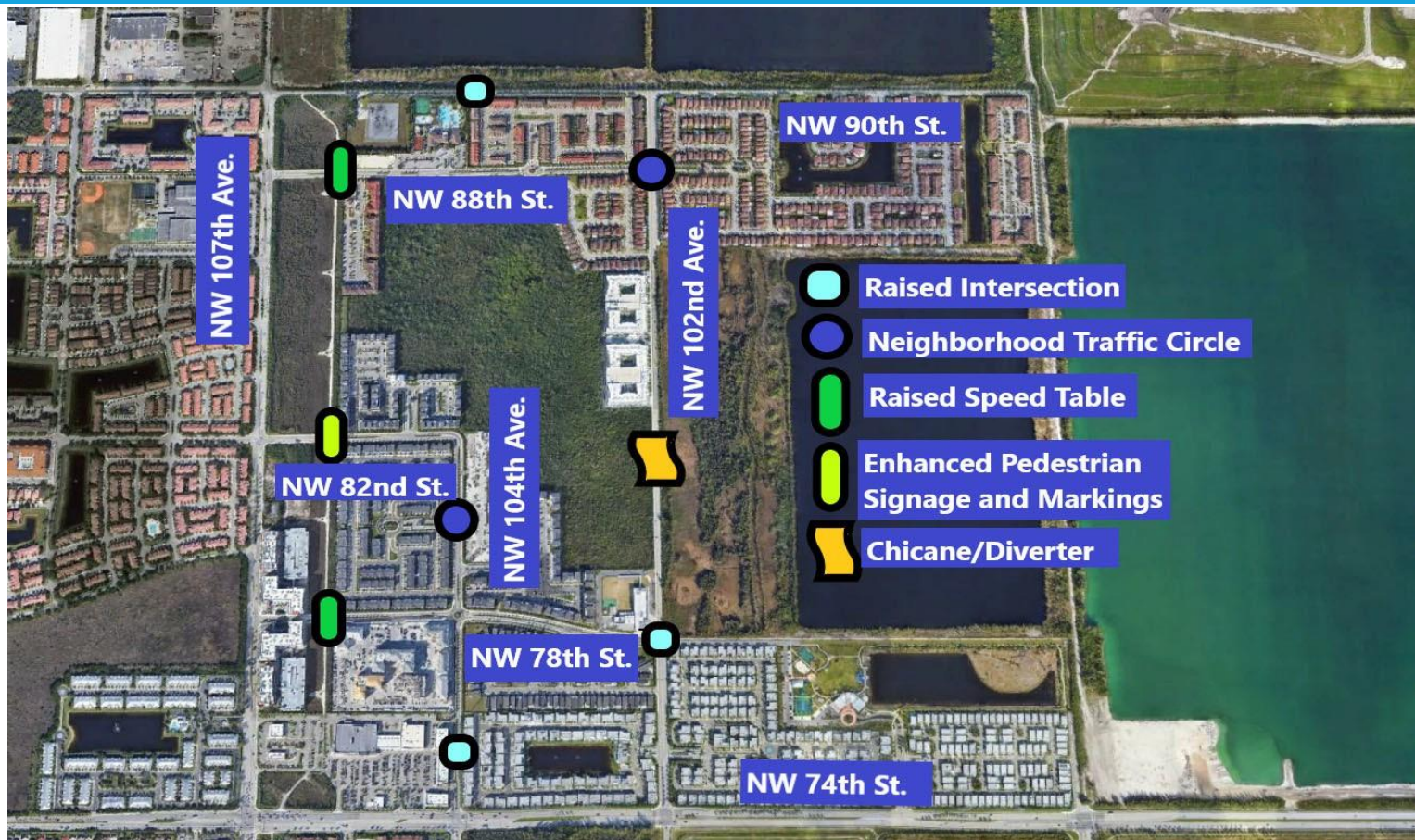
PROPOSED TRAFFIC IMPROVEMENT PLAN



- **NW 90th Street at the Astoria at Central Park Entrance/Intersection**
 - 85th Percentile Speed above/below Posted Speed (mph)- 8 mph
 - Proposed Raised Intersection



SECTION EIGHT OVERALL TRAFFIC CALMING PLAN



TRAFFIC CALMING IMPROVEMENT PLAN COSTS

Traffic Calming Improvements	Locations	Unit Cost	Base Cost	Contingency (15%)	Design, Permitting & Mobilization (30%)	Total Cost
Neighborhood Traffic Circle *	2	\$ 125,000	\$ 250,000	\$ 37,500	\$ 75,000	\$ 362,500
Raised Intersection **	3	\$ 100,000	\$ 300,000	\$ 45,000	\$ 90,000	\$ 435,000
Raised Speed Table at Mid Block Crossing ***	2	\$ 35,000	\$ 70,000	\$ 10,500	\$ 21,000	\$ 101,500
Enhanced Pedestrian Signage and Markings ****	1	\$ 30,000	\$ 30,000	\$ 4,500	\$ 9,000	\$ 43,500
Chicane/Diverter *****	1	\$ 75,000	\$ 75,000	\$ 11,250	\$ 22,500	\$ 108,750
Total Cost						\$ 1,051,250
* Neighborhood Traffic Circles are proposed at the NW 102nd Ave. and NW 88th St. Intersection; and at the NW 104th Ave. and NW 80th St. Intersection						
** Raised Intersections are proposed at the NW 102nd Avenue and NW 78th Street Intersection; and at the NW 104th Ave. at the Doral Commons Entrance/Intersection; and at the NW 90th St. at the Astoria at Central Park Entrance/Intersection						
*** Raised Speed Tables at Mid Block Crossings are proposed at the NW 88th St. at the North South Trail Crossing Intersection; and at the NW 78th St. at the North South Trail Crossing Intersection						
**** Enhanced Pedestrian Signage and Markings and Internally Illuminated Raised Pavement Markers is proposed at the NW 82nd St. at the North South Trail Crossing Intersection						
***** Chicane/Diverter is proposed along SW 102nd Ave. between Palmera Apartments and NW 78th St.						



RESIDENT FEEDBACK

- Traffic Calming Improvement Plan
- Additional Neighborhood Traffic Issues



NEXT STEPS

- Traffic Calming Technical Memorandum- November 2022
- Intergovernmental Agency Coordination and Revisions- December 2022
- Adoption of Traffic Calming Study by City of Doral- January 2023



QUESTIONS + THANK YOU



THANK YOU

