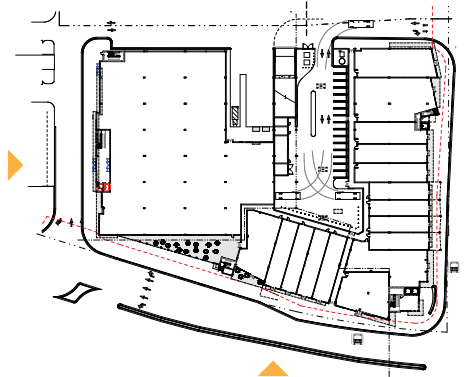
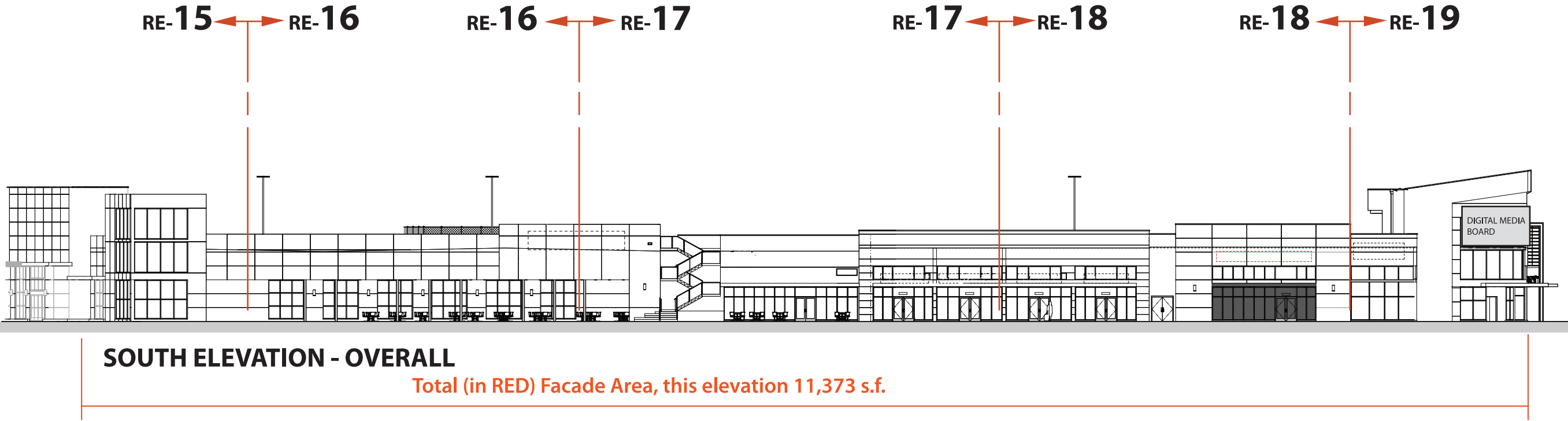


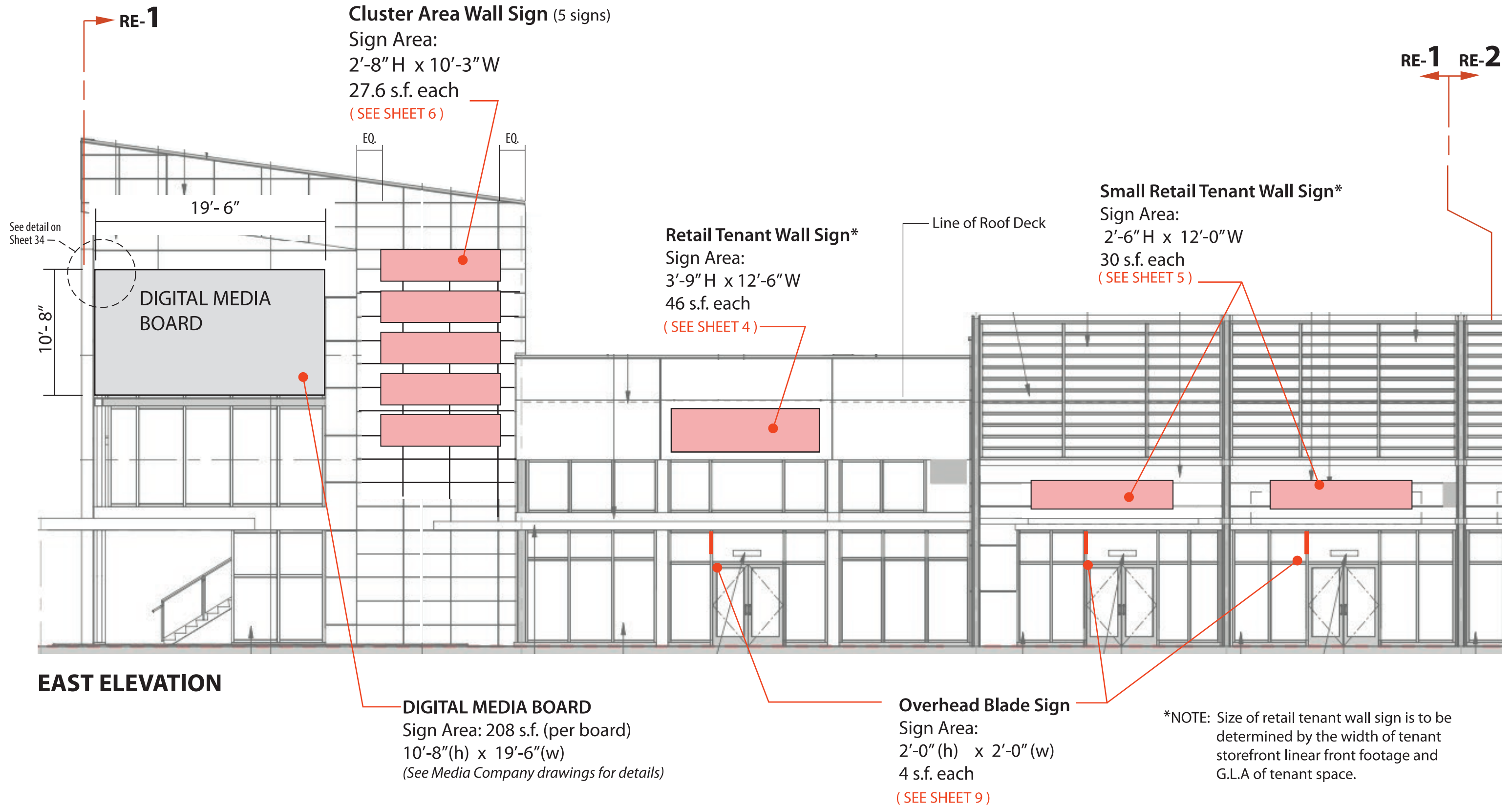
WEST

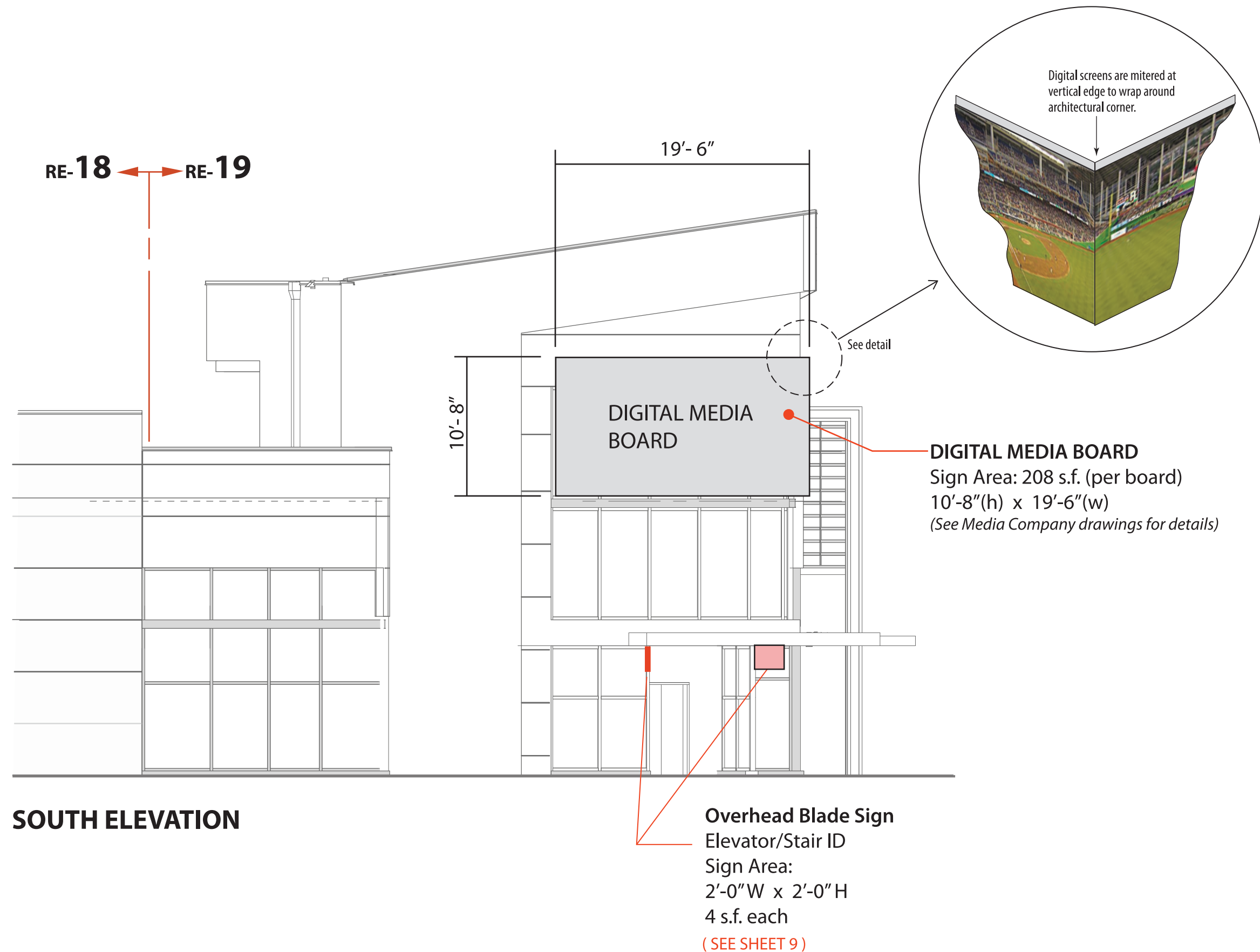


KEY MAP

SOUTH







DORAL ATRIUM BUILDING

TOTAL BUILDING CALCULATIONS

| Building | Width | Height Varies See Elevations | Total Square Footage of Facade | Allawable Sign Square Footage per Code 80-258-(a)1 (Linear Front Footage Allowed X 1.25) | Square Footage of All Signs per Elevation | Percentage of Wall Area Used for Signage |
|-------------------------------|-------|---------------------------------|-----------------------------------|---|---|---|
| Overall Total For Building | 1369 | * | 39,328 Sqft | 1712 | 1641* | <div>3.1% - 4.2%</div> <div>(1.1%) DELTA . Where 1.4 is allowed</div> |

* With Digital Media Boards



