

August 19, 2025

Darlin Perez
Chief of Engineering
City of Doral Public Works Department
8401 NW 53rd Terrace
Doral, FL 33166

Re: Professional Consulting Services for the Improvement of NW 104th Avenue.

Dear Ms. Perez:

Marlin Engineering, Inc. proposes to provide engineering design, preparation of construction documents, and contract documents, pursuant to the Continuing Professional Services Agreement provided by the City of Doral ("City") for Professional General Engineering and Architectural Services, dated May 9th, 2024.

I. General

The purpose of this project is to provide engineering design services for the improvement of NW 104th Avenue, from NW 68th Street to the entrance of the Vintage Place Condominium. The objective is to continue the existing typical roadway section through the corridor, in accordance with current design standards and the established alignment.

The proposed improvements will involve widening along the east side of the roadway, extending into the recently acquired Doral 10 vacant parcel, up to the condominium entrance. Additionally, intersection improvements are planned at NW 104th Avenue and NW 67th Street to address existing ponding issues and bring the ramps into compliance with current ADA and drainage standards.

The project has been divided into two distinct sites:

Site 1 – NW 104th Avenue Widening:

This portion includes the widening of NW 104th Avenue on the east side, from NW 68th Street to the entrance of the Vintage Place Condominium, approximately 950 feet in length (see Figure 1). The scope includes:

- Roadway widening to match the existing typical section.
- Addition of a median chevron and left-turn lanes
- Drainage system upgrades.
- Signage and pavement marking improvements.
- Landscaping tree removal from newly acquired property to accommodate the roadway widening.

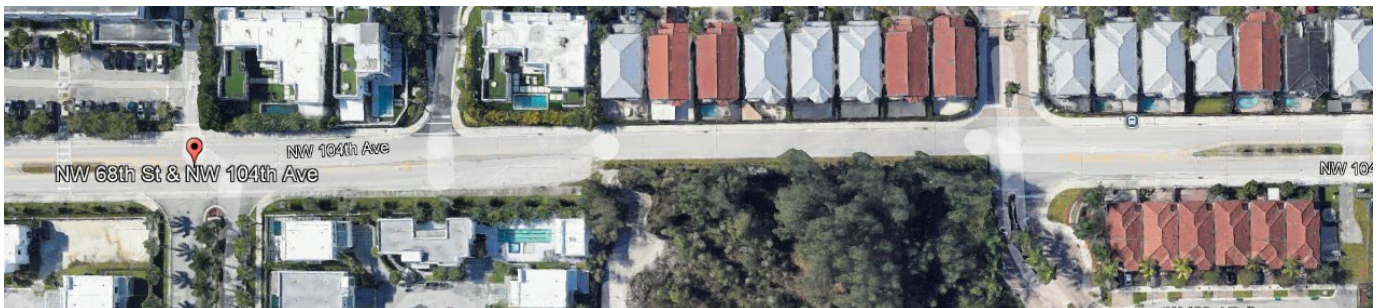


Fig. 1

Site 2 – Intersection Improvements at NW 104th Ave and NW 67th St:

This portion includes regrading work at the intersection to address existing ponding issues at the curb ramps located at the northeast and northwest corners. Both ramps will be reconstructed to meet current ADA and drainage requirements. (see Figure 2)



Fig. 2

The sidewalk improvements shall be in accordance with the American with Disabilities Act (ADA).

The scope of work outlines the effort required for the production of the construction documents will be in accordance with the City of Doral and Miami Dade County Standards and Specifications.

II. Scope of Services:

Task 1 – Pre-Design Services

Task 1.1 Survey

- a) Establish horizontal and vertical project control on the datum approved by the City of Doral.
- b) Perform a topographic survey with surface DTM to the entire facility including but not limited to: Flow line, edge of pavement, driveway entrances, existing utilities, building footprints, existing trees (location only), and existing grates for drainage structures.
- c) Perform Quality Control on survey deliverables.
- d) Digital Terrain Model (DTM): The DTM shall be delivered in a format compatible with ArcGIS Pro, including georeferenced raster files (.tif or .asc), TIN files (.xml or .dwg), or point cloud data (.las), depending on the survey method. All deliverables will use the specified coordinate system and include metadata detailing survey methodology, accuracy, and processing software.

The scope of work outlines the effort required for the production of the construction documents for the entire project. See the attached Survey Fee Proposal.

Task 1.2 Geotechnical Services – will be performed by **GEOSOL**. See the attached proposal for additional information

- a) Field Investigation.
- b) Engineering, Technical Services and Report Preparation.



- c) Final geotechnical report, including the FDOT Soil Survey Sheet, to be provided to the city, fully compliant with FDOT requirements.

Task 1.3 Utility Coordination

- a) Coordinate with utility owners for facilities within project limits.
- b) Two (2) copies of the survey will be forwarded to each utility company known to operate in the vicinity of the Project Area. Each utility company will be requested to return one redline survey, identifying the horizontal and vertical location of their facilities. This information will be incorporated into the design upon receipt from the utility companies.

Task 1.4 Project Meetings/Coordination

MARLIN staff will attend meetings to coordinate the submittal and present the findings and mitigation strategies to the city, as necessary. MARLIN will provide status updates on the schedule in a timely manner.

Deliverables for this task will include:

Digitally Signed and Sealed Survey in PDF and AutoCAD file format.
Digitally signed and Sealed Geotechnical Report in PDF.

Task 2 – Plans Production

Task 2.1 – 60% Plans Production Prepare design plans for the proposed improvements for review and comments by the City of Doral.

- a) Prepare complete contract set of plans including:
 - Key Sheet
 - Tabulation of Quantities
 - General Notes
 - Typical Section
 - Plan and Profile Sheets with drainage vertical solutions
 - Cross Sections
 - Drainage structures
 - Traffic Control Notes/Phasing Sheet
 - Signing and Pavement Marking Sheets
 - Special Detail Sheets – Drainage and ADA Ramps.
- b) Calculation of quantities – Calculate quantities of construction items and tabulate.
- c) Construction cost estimate – Prepare a construction cost estimate
- d) Quality Control and Peer Review – Perform quality control and peer review of contract documents. If requested by the City of Doral, a copy of the marked up set of plans and/or specifications will be provided showing the consultant's QC review on each scheduled deliverable. The submittals shall include the name of the consultant staff that performed the QC review for each component.
- e) Permitting – Permit will be required from the Miami-Dade County Department of Transportation and Public Works (DTPW) and Miami-Dade County RER DERM office. Permitting fees are not included in this proposal and are the responsibility of the city.

Deliverables for this Task will include:

60% Construction Plans Package (11"x 17")



60% Engineer's Construction Estimate (OPC)

Task 2.2 - 100 % Plans Production

- a) Incorporate comments from previous submittal and Finalize Construction Plans Production.
- b) Permitting – Obtain permits from Miami-Dade County DTPW and Miami-Dade County RER.
- c) Submit the 100% plans for City review. Once all comments are addressed, or if no comments or corrections are necessary, submit the final signed and sealed construction documents and specifications to the city.

Deliverables for this Task will include:

- Final signed and sealed construction documents and specifications.
- Updated construction cost estimate. (OPC)

Task 3 – Tree Disposition and Permitting

Tree disposition and permitting services will be performed by Miller Legg (see attached proposal for details). Scope includes:

- Tree survey and inventory
- Preparation of a Tree Disposition Plan (preserve, remove, relocate)
- Coordination with regulatory agencies (DERM, City of Doral)
- Permit application preparation and submittal.
- Response to agency comments and permit follow-up

Coordination of tree protection and mitigation measures during construction.

III. Schedule of Work – Time of Performance

Consultant will submit the deliverable and perform the Services as stated in the table below:

Task or Activity ID#	Major Task, Sub-Task, Activity, or Deliverables	Anticipated Delivery Date
1	Pre-design Services	NTP + 6 weeks
2.1	60% Plans	NTP + 14 weeks
	Review by The City	NTP + 16 week
2.2	100% Plans/ Permitting	NTP + 26 weeks

MARLIN will provide the city with the Services defined in the Scope section above. The anticipated Notice to Proceed for these Services is TBD.

IV. Compensation

Consultant shall perform the work detailed in this Proposal for a Total fee of \$ 96,870.09. The City shall not be liable for any fee, cost, expense or reimbursable expense, or other compensation beyond this



amount unless approved in a supplemental work order.

SUMMARY OF COMPENSATION			
Task or Activity ID #	Task Name and/or Activity Description	Fee Amount	Fee Basis
TASK 1	PREDESIGN SERVICES		
1.1	Survey- Site 1	\$ 11,516.59	Time & Material/Not to Exceed
1.1	Survey- Site 2	\$ 6,843.51	Time & Material/Not to Exceed
1.2	Geotech	\$ 11,575.01	Time & Material/Not to Exceed
1.3	Utility Coordination	\$ 3,996.00	Time & Material/Not to Exceed
1.4	Project Matings/Coordination	\$ 3,969.60	Time & Material/Not to Exceed
TASK 2	PLANS PRODUCTION		
2.1	60% Plans Production	\$ 17,480.00	Time & Material/Not to Exceed
	Field Reviews	\$ 1,985.00	Time & Material/Not to Exceed
	Drainage Design and Calculations	\$ 10,262.00	Time & Material/Not to Exceed
2.2	100% Plans Production	\$ 12,243.00	Time & Material/Not to Exceed
TASK 3	TREE DISPOSITION AND PERMITTING	\$ 17,000.00	Time & Material/Not to Exceed
	TOTAL FEE	\$ 96,870.09	

V. Exclusions from Basic Services-

- **LAP Project Services:** If the project transitions to a Local Agency Program (LAP) project, environmental documentation, LAP-required documents, and plan submittals through the FDOT ERC system will be excluded from basic services.
- **Lighting Plans** are not included in this proposal.
- **Permit Fees:** All permit fees are excluded from this proposal.
- **Post Design Services:** not included in this phase.

VI. Additional Services



Additional services and unforeseen circumstances beyond established scope shall be negotiated in good faith and at the sole discretion of the City.

VII. City Furnished Documents & Data

The following information or documents are to be provided by the city, if available: As-built information including geotechnical information.

To support the design phase, the following documents have been provided by the city:

- Environmental Site Assessment.
- Warrant Study completed.

VIII. Project Manager

Consultant's Project Manager for this Project will be Ms. Aysel Freda, P.E.

Marlin Engineering Inc. appreciates the opportunity to submit this scope and Fee Estimate and we look forward to being of service. If you have any questions with respect to this proposal, do not hesitate to contact us. On behalf of MARLIN ENGINEERING Inc, I thank you again, for the opportunity with you on this important project.

Submitted by:

A handwritten signature in blue ink, appearing to read "Aysel Freda", is written over a horizontal line.

Aysel Freda, P.E.
Director of Business
Development
Marlin Engineering,
Inc

Reviewed and approved in concept recommended by:

Darlin Perez P.E
Chief of Engineering

CITY OF SOUTH MIAMI

Consultant Fee Proposal Worksheet

Consultant Name: [Marlin Engineering, Inc.](#)

Contract No.:

Date: 9/4/2025

Work Order No:

Project: **Improvement of NW 104 Ave**Project No.: Description: **NW 104 Ave Widening & Intersection Improvements at NW 104 Ave & NW 67 St**

	STAFF CLASSIFICATION																	
Job Classification Assigned Staff Approved Rate	Project Manager Rafael Lagos Rate: \$257.80		Senior Engineer Yenny Soca Rate: \$238.40		Project Engineer Yaromil Santos Rate: \$199.85		CADD Technician Dalgis Lara Rate: \$125.15		Clerical Jorge Padron Rate: \$94.13		Rate:		Rate:		Staff Hours	Salary	Average	
	Man hours	Cost/ Task	Man hours	Cost/ Task	Man hours	Cost/ Task	Man hours	Cost/ Task	Man hours	Cost/ Task	Man hours	Cost/ Task	Man hours	Cost/ Task	By Task	Cost By Task	Rate Per Task	
1 TASK 1 - PRED-DESIGN SERVICES																		
2 Task 1.1 - Survey (See below)																		
3 Task 1.2 - Geotechnical Services (See below)																		
4 Task 1.3 - Utility Coordination	3	\$773	3	\$715			8	\$1,001	16	\$1,506					30	\$3,996	\$133.20	
5 Task 1.4 - Project Meetings/Coordination	8	\$2,062	8	\$1,907											16	\$3,970	\$248.10	
6 TASK 2 - PLAN PRODUCTION																		
7 Task 2.1 - 60% Plans Production	8	\$2,062	16	\$3,814	28	\$5,596	48	\$6,007							100	\$17,480	\$174.80	
9 Field Reviews	4	\$1,031	4	\$954											8	\$1,985	\$248.10	
10 Drainage Design & Calculations	4	\$1,031	6	\$1,430	24	\$4,796	24	\$3,004							58	\$10,262	\$176.92	
11 Task 2.2 - 100% Plans Production	6	\$1,547	9	\$2,146	24	\$4,796	30	\$3,755							69	\$12,243	\$177.44	
12 TASK 3 - TREE DISPOSITION AND PERMITTING																		
13 (See below)																		
14																		
15																		
16																		
17																		
18																		
19																		
20																		
21																		
22																		
23																		
24																		
25																		
26																		
27																		
Total Staff Hours	33		46		76		110		16						281			
Total Staff Cost		\$8,507.40		\$10,966.40		\$15,188.60		\$13,766.50		\$1,506.08						\$49,934.98	\$177.70	

Note: Fee for the Principal(s) of the firm are not to be included above as the multiplier is not applicable to their hours. The fee is to be shown below and entered as a separa

Estimate of Principal's Fee

Total hours / hour = \$ -

Notes:

1. This sheet is to be used by Prime Consultant to calculate the Grand Total Fee and one is to be used for each Subconsultant
2. Manually enter fee from each subconsultant. Unused subconsultant rows may be hidden
3. Where applicable the basis for work activity descriptions shall be the FICE/FDOT Standard Scope and Staff Hour Estimation Handbook.
4. Enter the multiplier value in the field after the word "multiplier" Maximum of 2 decimal points.

1 - SUBTOTAL ESTIMATED FEE: multiplier 1.00

Survey Fee: Site 1

Survey Fee: Site 2

Geotechnical Field/Lab [Geosol](#)

Landscape-Miller Legg

Principal's Fee

2 - SUBTOTAL ESTIMATED FEE:

Geotechnical Field/Lab Testing:

Survey Fee (or Survey Crew Fee):

Other Misc. Fee: [Enter Fee Description](#)

3 - SUBTOTAL ESTIMATED FEE:

Additional Services (Allowance)

Reimbursables (Allowance)

GRAND TOTAL ESTIMATED FEE:

\$49,934.98

\$11,516.59

\$6,843.51

\$11,575.01

\$17,000.00

\$ -

\$96,870.09

\$96,870.09

\$96,870.09

**The City of Doral
NW 104th Avenue- City of Doral
Survey Fee Estimate**

Description	Senior Surveyor and Mapper	Survey Tech	2 Person Crew/ 8hrs/ 1 day	Total
	\$202.62	\$116.24	\$1,697.22	
Research and Calculate plat(s) & right of way	2	8		\$1,335.16
Research H/V Control; Check traverse & benchrun		5		\$581.20
Traverse & Bench run		0	1	\$1,697.22
The purpose of this survey is to provide a detailed topographic and improvement survey along NW 104th Avenue, specifically from NW 68th Street to NW 70th Street. The survey shall extend from right-of-way line to right-of-way line, with an additional 10 feet beyond each right-of-way line. The limits will also be extended an additional 20 feet to the east to accommodate future drainage design. The survey shall locate and map all visible surface features and improvements within the designated limits, including but not limited to pavement limits and surface types, curb and gutter, driveways and sidewalks, utility poles, drainage structures and inlets, including obtaining structure data such as pipe material, size, invert elevation, and bottom of structure, swale and surface drainage features, above-ground visible utilities, pavement markings and traffic striping, street signage, and trees with a diameter of 4 inches or greater, measured at breast height. Approximate survey length: 525 linear feet		4	2.5	\$4,708.01
Prepare survey AutoCAD Civil 3D file and signed and sealed pdf (24"x36" format), and DTM	2	24		\$3,195.00
Total:				\$11,516.59

	4	41	3.5

The City of Doral
NW 104th Avenue- City of Doral
Survey Fee Estimate

Description	Senior Surveyor and Mapper	Survey Tech	2 Person Crew/ 8hrs/ 1 day	Total
	\$202.62	\$116.24	\$1,697.22	
Research and Calculate plat(s) & right of way	2	4		\$870.20
Research H/V Control; Check traverse & benchrun		4		\$464.96
Traverse & Bench run		0	0.5	\$848.61
The scope of this survey is to provide a detailed topographic and improvement survey of the intersection of NW 104th Avenue and NW 67th Street. The survey shall extend a minimum of 100 feet in each direction from the center of the intersection along both roadways, or as directed, and shall include the full width of the right-of-way, plus an additional 10 feet beyond each right-of-way line on all sides. The survey shall locate and map all visible surface features and improvements within the designated limits, including but not limited to pavement limits and surface types, curb and gutter, driveways and sidewalks, utility poles, drainage structures and inlets, including obtaining structure data such as pipe material, size, invert elevation, and bottom of structure, swale and surface drainage features, above-ground visible utilities, pavement markings and traffic striping, street signage, and trees with a diameter of 4 inches or greater, measured at breast height. The survey area shall also be extended as necessary to support drainage design and geometric evaluation of the intersection.		2	1	\$1,929.70
Prepare survey AutoCAD Civil 3D file and signed and sealed pdf (24"x36" format), and DTM (Delivery to COD)	2	20		\$2,730.04
Total:				\$6,843.51

4	30	1.5
---	----	-----

Marlin Engineering
3363 W. Commercial Blvd, Suite 115
Fort Lauderdale, Florida 33309

August 8, 2025
(Revised August 27, 2025)

Attention: Mr. Rafael Lagos, PE – Chief Engineer

Re: **Proposal for Geotechnical Services**
NW 104th Avenue Roadway and Drainage Improvements
From NW 68th Street
To Vintage Place Condominium Entrance
City of Doral, Florida
GEOSOL Proposal No. P-225189-R2

Dear Mr. Lagos:

In accordance with your requests on August 8 and 26, 2025, Geosol, Inc. (GEOSOL) is pleased to submit this proposal pertaining to geotechnical services for the above-referenced project. The enclosed proposal includes an estimate of the work effort and our anticipated approach, based on our understanding of the project.

PROJECT INFORMATION

As we understand it, the City of Doral is planning to provide improvements along NW 104th Avenue from NW 68th Street to Vintage Place Condominium Entrance in the City of Doral, Florida. As we understand it, the proposed improvements include about 350 linear feet of roadway widening (24-foot wide) along east side of NW 104th Avenue, milling and resurfacing of about 900 feet of the existing pavement, as well as drainage improvements along the project limits. Specifically, geotechnical services will be required in order to explore the subsurface conditions to provide site preparation recommendations and explore the presence of muck that may have been left in place and address as part of our geotechnical recommendations. As requested, this proposal does not include any geotechnical services for the proposed milling and resurfacing of the existing pavement.

SCOPE OF SERVICES

General

As requested, geotechnical services will be required for the proposed above-referenced improvements. Specifically, as requested, the geotechnical scope of services for this phase of the project includes the performance of an SPT boring for the proposed roadway widening. Also, borehole percolation tests are required for use in drainage evaluations and design. The following section provides a discussion regarding the proposed geotechnical investigation program.



5795-A N.W. 151st Street
Miami Lakes, FL 33014
Phone (305) 828-4367; Fax (305) 828-4235
E-mail: geosolusa@bellsouth.net

Field Exploration and Laboratory Testing Programs

1. Perform site reconnaissance, locate and coordinate for existing utilities that may interfere with the drilling operations.
2. Perform a total of four (4) SPT borings to depths of 10 feet below grades for roadway widening along east side of NW 104th Avenue from north of NW 68th Street to the Vintage Place Condominium Entrance.
3. Perform two (2) borehole percolation tests for use in drainage evaluations and design at depths of 15 feet. The testing will be performed in accordance with the South Florida Water Management District's Usual Open-Hole testing procedures.
4. Backfill the boreholes using cement grout mix.
5. Visually examine all recovered soil/rock samples and asphalt pavement specimen in the laboratory. A geotechnical engineer will examine all recovered soil and rock samples.

For location of our tests, we will use the aerials provided to us that show the requested testing locations. We will use the aerials, existing landmarks and standard taping procedures to locate the testing locations in the field.

Geotechnical Engineering Evaluation and Reporting

Using the results of the field exploration, we will assess the geotechnical engineering impact of the subsurface conditions on the planned construction and provide recommendations for foundation design and related construction. A geotechnical engineering report of our findings and recommendations will be prepared and submitted at the conclusion of the study. The report will be prepared, signed and sealed by a professional engineer registered in the State of Florida. The report will specifically contain the following information:

- A plan of the site showing the location of the test location.
- A brief review of our test procedures and the results of the testing conducted.
- Estimated subsurface profiles as necessary to illustrate subsurface conditions including standard penetration resistance test data and groundwater levels.
- A review of surface features and site conditions that could affect construction and site preparation.
- General evaluation of the site considering the proposed project and estimated subsurface conditions.



Proposal for Geotechnical Services
 NW 104th Avenue Roadway and Drainage Improvements
 From NW 68th Street
 To Vintage Place Condominium Entrance
 City of Doral, Florida
GEOSOL Proposal No. P-225189-R2

- Hydraulic conductivity (k) values of subsurface materials based on results of borehole percolation testing.
- Construction considerations.
- A Soil Survey Sheet in accordance with FDOT specifications.
- Signed and sealed geotechnical-engineering reports.

SCHEDULE

Our study can begin within one (1) day upon receiving your formal notice to proceed. We will begin by calling SunShine One Call Services to have underground utilities marked and cleared. This task typically takes up to five (5) days. Given the scope described herein, we can complete the field study for the site within two (2) working days. The laboratory testing can be completed within a period of five (5) working days. The geotechnical report can be completed in ten (10) working days after completion of the laboratory testing program. Therefore, we can complete the requested services in about a five (5)-week period upon receiving Notice to Proceed.

FEES


Based on our general knowledge and an interpretation of your requirements, we are willing to complete the subsurface exploration and report preparation for the subject site for a total sum of \$11,575.01. The unit rates used for this proposal are those from Miami-Dade County Contract No. E19-DTPW-06 for Soils, Foundations, and Geotechnical Testing Services. We have enclosed a detailed Fee Proposal for your review in Attachment 1.

GEOSOL appreciates your consideration of our firm to undertake this project. If you have any questions, please do not hesitate to contact us.

Sincerely,
GEOSOL, INC.



Oracio Riccobono, P.E.
 Chief Geotechnical Engineer/President



Adnan Ismail, P.E.
 Senior Geotechnical Engineer

Attachment 1 – Fee Proposal



Proposal for Geotechnical Services
NW 104th Avenue Roadway and Drainage Improvements
From NW 68th Street
To Vintage Place Condominium Entrance
City of Doral, Florida
GEOSOL Proposal No. P-225189-R2

ATTACHMENT 1

FEE PROPOSAL



GEOSOL, INC.**REVISED FEE PROPOSAL FOR GEOTECHNICAL SERVICES**

**NW 104th Avenue Roadway and Drainage Improvements From NW 68th Street to Vintage Place Condominium Entrance
City of Doral, Florida**

GEOSOL PROPOSAL No. P-225189-R2

<u>DESCRIPTION</u>	UNITS	# OF UNITS	UNIT RATE (\$)	TOTAL \$
<u>1. FIELD INVESTIGATION</u>				
<u>1A) FIELD ACTIVITIES</u>				
Standard Penetration Test Borings - 4 location to 10 ft in depth for pavement widening along east side of NW 104th Avenue from north of NW 68th Street to the Vintage Place Condominium Entrance	FEET	40.0	\$22.93	\$917.20
Percolation Tests - Open Hole Method - Testing at 2 locations at 15 feet deep	EACH	2.0	\$552.96	\$1,105.92
Closing Holes with Grout	FEET	70.0	\$9.17	\$641.90
Engineering Technician (Boring Layout, Utility Clearance, and Field Meetings)	HOURL	6	\$142.40	\$854.40
SUB-TOTAL (for FIELD INVESTIGATION)				\$3,519.42
<u>1B) MOBILIZATION/DEMOBILIZATION & MOT COORDINATION</u>				
Mobilization of truck mounted rig	EACH	2	\$401.27	\$802.54
Cones, Sign, Flags, Barricades, Arrow Board	DAY	2	\$250.00	\$500.00
Traffic Control - Off Duty Policeman (assume 1 day @ 8 Hrs.)	HOURL	8	\$85.00	\$680.00
Traffic Control - Support Vehicle	HOURL	16	\$68.00	\$1,088.00
SUB-TOTAL (MOB/DEMOB, & MOT COORDINATION)				\$3,070.54
TOTAL FIELD INVESTIGATION				\$6,589.96
<u>2. LABORATORY PROGRAM</u>				
Moisture Test	EACH	2	\$43.57	\$87.14
Grain Size per AASHTO T-27 including -200 wash	EACH	2	\$73.37	\$146.74
Material Finer than 200 Sieve per ASTM C-117	EACH	2	\$51.59	\$103.18
Organic Content Test/Limerock per AASHTO T-267	EACH	2	\$57.32	\$114.64
Corrosion Testing including resistivity, chlorides, pH & sulfates per FDOT 5-550 to FM 5-553	EACH	1	\$165.10	\$165.10
TOTAL LABORATORY PROGRAM				\$616.80
TOTAL FIELD AND LABORATORY PROGRAM				\$7,206.76
<u>3. ENGINEERING SERVICES</u>				
Chief Project Engineer	HOURL	4	\$293.76	\$1,175.04
Senior Engineer	HOURL	6	\$238.40	\$1,430.40
Project Engineer	HOURL	6	\$199.85	\$1,199.10
CADD Technician	HOURL	3	\$125.15	\$375.45
Clerical	HOURL	2	\$94.13	\$188.26
TOTAL ENGINEERING SERVICES				\$4,368.25
TOTAL GEOTECHNICAL FEES FOR PROJECT				\$11,575.01