

5/7/2025 4:42:54 PM dlara
C:\Worksets\FDOT_2024033\002_Roadway\Location#3_NW 33 ST\KEY\SHD01.dgn

COMPONENTS OF CONTRACT PLANS SET
MILLING AND RESURFACING & SIGNING AND PAVEMENT MARKINGS
AT NW 33 ST FROM NW 107 AVE. TO NW 104 AVE.

CONTRACT PLANS



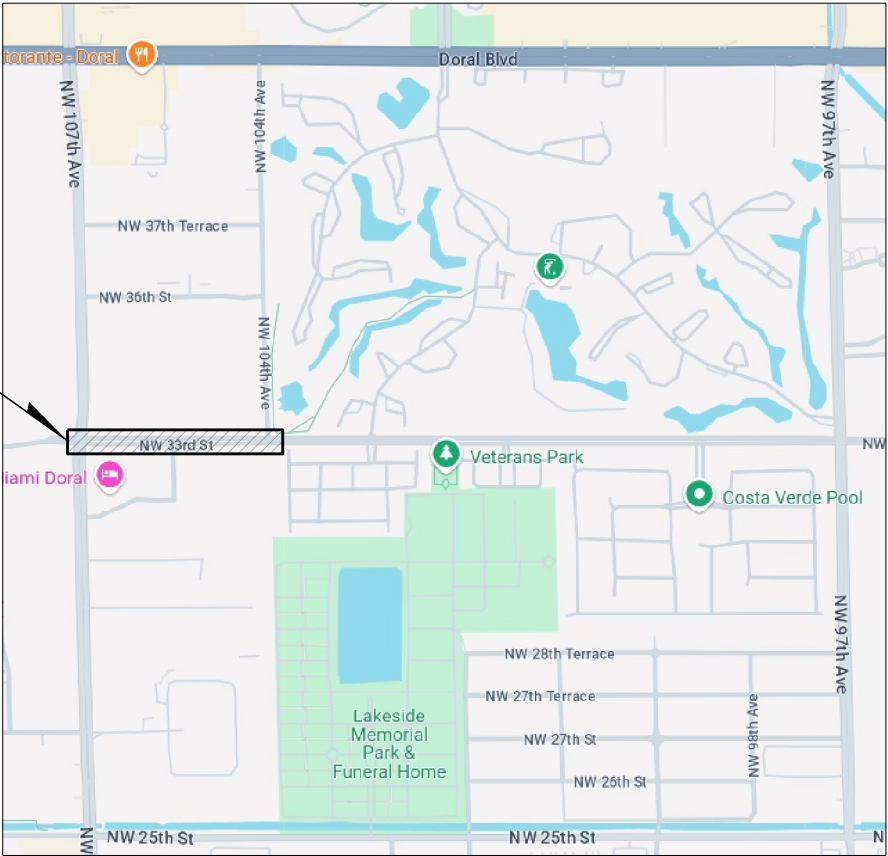
MILLING AND RESURFACING &
SIGNING AND PAVEMENT MARKINGS
AT NW 33 ST FROM NW 107 AVE. TO NW 104 AVE.
CITY OF DORAL
MIAMI-DADE COUNTY

INDEX OF ROADWAY PLANS

SHEET NO.	SHEET DESCRIPTION
1	KEY SHEET
2	SUMMARY OF QUANTITIES
3	GENERAL NOTES
4 TO 5	PLAN SHEET
*1, 3 of 7	FDOT INDEX 522-002 DETECTABLE WARNINGS AND SIDEWALK CURB RAMPS
*1-3 of 3	FDOT INDEX 525-024 CURB INLET TYPE 9

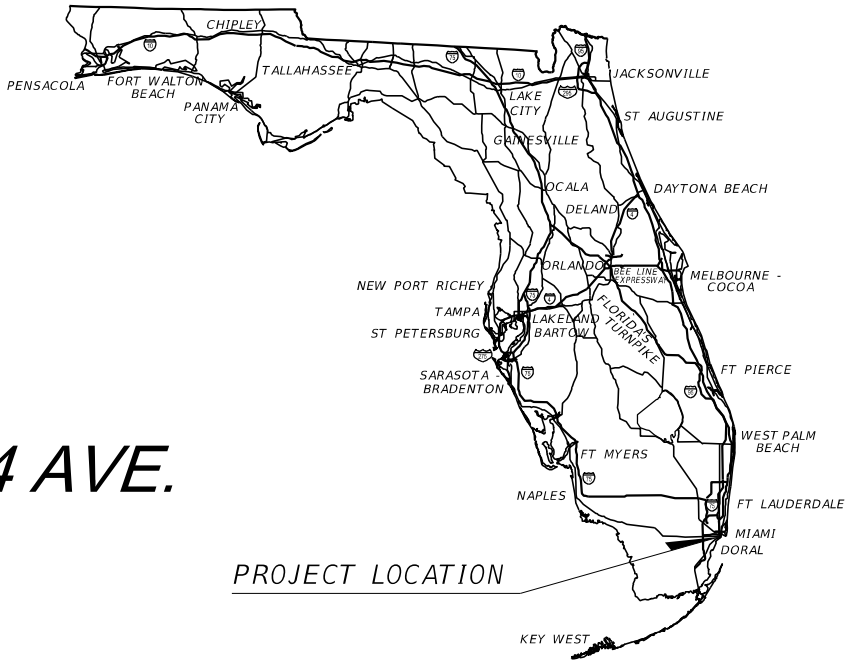
* THESE SHEETS ARE INCLUDED IN THE INDEX OF SHEETS
ONLY TO INDICATE THAT THEY ARE PART OF THE
CONSTRUCTION PLANS.

PROJECT LOCATION



LOCATION MAP

THESE PLANS HAVE BEN PREPARED IN ACCORDANCE WITH AND ARE GOVERNED BY
THE CITY OF DORAL STANDARDS, MIAMI-DADE COUNTY PUBLIC WORKS DEPARTMENT
STANDARDS AND SPECIFICATIONS PART 1, 2 AND 3, THE MANUAL OF MINIMUM STANDARDS
FOR DESIGN, CONSTRUCTION AND MAINTENANCE FOR STREETS AND HIGHWAYS, THE FLORIDA
DEPARTMENT OF TRANSPORTATION FY 2024-2025 STANDARD PLANS AND STANDARD
SPECIFICATIONS FOR ROAD AND BRIDGE CONSTRUCTION DATED 2024-25, AS AMENDED BY THE
CONTRACT DOCUMENTS.



PROJECT LOCATION

PREPARED FOR
CITY OF DORAL
PUBLIC WORKS DEPARTMENT
8401 NW 53RD TERRACE, 2ND FLOOR
DORAL, FLORIDA 33166

ROADWAY SHOP DRAWINGS
TO BE SUBMITTED TO:

RAFAEL A. LAGOS, P.E.
P.E. LICENSE NUMBER 51412
MARLIN ENGINEERING, INC.
3363 W COMMERCIAL BLVD. - SUITE 115
FT. LAUDERDALE, FLORIDA 33309

THIS ITEM HAS BEEN DIGITALLY
SIGNED AND SEALED BY

ON THE DATE ADJACENT TO THE SEAL

PRINTED COPIES OF THIS DOCUMENT ARE
NOT CONSIDERED SIGNED AND SEALED
AND THE SIGNATURE MUST BE VERIFIED
ON ANY ELECTRONIC COPIES.

ROADWAY PLANS
ENGINEER OF RECORD:

RAFAEL A. LAGOS, P.E.
P.E. LICENSE NUMBER 51412
MARLIN ENGINEERING, INC.
3363 W COMMERCIAL BLVD. - SUITE 115
FT. LAUDERDALE, FLORIDA 33309

PLANS PREPARED BY:

MARLIN
ENGINEERING
3363 W COMMERCIAL BLVD. - SUITE 115
FT. LAUDERDALE, FLORIDA 33309

CITY COUNCIL

MAYOR
CHRISTI FRAGA

VICE MAYOR
MAUREEN PORRAS

COUNCILMAN
RAFAEL PINEYRO

COUNCILWOMAN
DIGNA CABRAL

COUNCILWOMAN
NICOLE REINOSO

FISCAL YEAR	SHEET NO.
2025	1

2/4/2025 4:56:33 PM dlara
C:\Worksets\FDOT\2024033.002\Roadway\Location # 3_IWW 33 ST\TB.dgn

SUMMARY OF QUANTITIES (ROADWAY)				
PAY ITEM NO.	DESCRIPTION	UNIT	COMPONENT	
			ROADWAY	
			PLAN	FINAL
0101 1	MOBILIZATION	LS	1	
0102 1	MAINTENANCE OF TRAFFIC	LS/DA	1/60	
0104 18	INLET PROTECTION SYSTEM	EA	6	
0110 1 1	CLEARING & GRUBBING	AC	0.01	
0110 4 10	REMOVAL OF EXISTING CONCRETE	SY	21	
285704	OPTIONAL BASE, BASE GROUP 04 (6")	SY	1	
0327 70 1	MILLING EXISTING ASPHALT PAVEMENT, 1" AVG DEPTH	SY	8,628	
0337 7 82	ASPHALT CONCRETE FRICTION COURSE, TRAFFIC C, FC-9.5, PG 76-22	TN	474.7	
0425 1201	INLETS, CURB, TYPE 9, <10'	EA	1	
430173118	PIPE CULVERT OPTIONAL MATERIAL, ROUND, 18", GUTTER DRAIN	LF	4	
0520 1 10	CONCRETE CURB & GUTTER, TYPE F	LF	13	
0520 2 4	CONCRETE CURB, TYPE D	LF	17	
0522 2	CONCRETE SIDEWALK AND DRIVEWAYS, 6" THICK	SY	23	
0527 2	DETECTABLE WARNINGS	SF	14	
0570 1 2	PERFORMANCE TURF, SOD	SY	100	
0425 5	MANHOLE, ADJUST	EA	4	
0425 6	VALVE BOXES, ADJUST	EA	7	

SUMMARY OF QUANTITIES (SIGNALIZATION)				
PAY ITEM NO.	DESCRIPTION	UNIT	COMPONENT	
			SIGNALIZATION	
			PLAN	FINAL
0630 2 12	CONDUIT, FURNISH & INSTALL, DIRECTIONAL BORE	LF	44	
0635 2 11	PULL & SPLICE BOX, F&I, 13" x 24" COVER SIZE	EA	2	
0660 2106	LOOP ASSEMBLY, F&I, TYPE F	AS	4	

SUMMARY OF QUANTITIES (SIGNING & PAVEMENT MARKING)				
PAY ITEM NO.	DESCRIPTION	UNIT	COMPONENT	
			SPM	
			PLAN	FINAL
0700 1111	SINGLE COLUMN GROUND SIGN ASSEMBLY, F&I GROUND MOUNT, LESS THAN 12 SF	EA	3	
0700 1600	SINGLE COLUMN GROUND SIGN ASSEMBLY, REMOVE	EA	3	
0706 1 3	RAISED PAVEMENT MARKER, TYPE B	EA	160	
0710 11101	PAINTED PAVEMENT MARKINGS, STANDARD, WHITE, SOLID, 6"	GM	0.557	
0710 11102	PAINTED PAVEMENT MARKINGS, STANDARD, WHITE, SOLID FOR INTERCHANGE AND URBAN ISLAND, 8"	GM	0.033	
0710 11124	PAINTED PAVEMENT MARKINGS, STANDARD, WHITE, SOLID FOR DIAGONAL OR CHEVRON, 18"	LF	30	
0710 11125	PAINTED PAVEMENT MARKINGS, STANDARD, WHITE, SOLID FOR STOP LINE OR CROSSWALK, 24"	LF	66	
0710 11160	PAINTED PAVEMENT MARKINGS, STANDARD, WHITE, MESSAGE OR SYMBOL	EA	2	
0710 11170	PAINTED PAVEMENT MARKINGS, STANDARD, WHITE, ARROWS	EA	9	
0710 11201	PAINTED PAVEMENT MARKINGS, STANDARD, YELLOW, SOLID, 6"	GM	0.446	
0710 11224	PAINTED PAVEMENT MARKINGS, STANDARD, YELLOW, SOLID FOR DIAGONAL OR CHEVRON, 18"	LF	36	
0710 11131	PAINTED PAVEMENT MARKINGS, STANDARD, WHITE, SKIP, 10-30 OR 3-9 SKIP, 6" WIDE	GM	0.498	
0710 12290	PAINTED PAVEMENT MARKINGS, DURABLE PAINT, YELLOW, ISLAND NOSE	SF	19	
0711 11102	THERMOPLASTIC, STANDARD, WHITE, SOLID, 8" FOR INTERCHANGE AND URBAN ISLAND	GM	0.033	
0711 11124	THERMOPLASTIC, STANDARD, WHITE, SOLID, 18" FOR DIAGONALS AND CHEVRONS	LF	30	
0711 11125	THERMOPLASTIC, STANDARD, WHITE, SOLID, 24" FOR STOP LINE AND CROSSWALK	LF	66	
0711 11160	THERMOPLASTIC, STANDARD, WHITE, MESSAGE OR SYMBOL	EA	2	
0711 11170	THERMOPLASTIC, STANDARD, WHITE, ARROW	EA	9	
0711 11224	THERMOPLASTIC, STANDARD, YELLOW, SOLID, 18 FOR DIAGONAL OR CHEVRONS	LF	36	
0711 16101	THERMOPLASTIC, STANDARD, OTHER SURFACES, WHITE, SOLID, 6	GM	0.557	
0711 16131	THERMOPLASTIC, STANDARD-OTHER SURFACES, WHITE, SKIP, 6",10-30 SKIP OR 3-9 LANE DROP	GM	0.498	
0711 16201	THERMOPLASTIC, STANDARD, OTHER SURFACES, YELLOW, SOLID, 6"	GM	0.446	

REVISIONS			
DATE	DESCRIPTION	DATE	DESCRIPTION



RAFAEL A. LAGOS • P.E. No.: 51412
3363 W Commercial Blvd., Ste. 116 Ft Lauderdale, FL 33309
(954) 870-5050 • C.A. No. 6104



CITY OF DORAL

MILLING AND RESURFACING &
SIGNING AND PAVEMENTS MARKINGS AT
NW 33th ST FROM NW 107 AVE TO NW 104 AVE

SUMMARY
OF
QUANTITIES

SHEET
NO.

2

THE OFFICIAL RECORD OF THIS SHEET IS THE ELECTRONIC FILE DIGITALLY SIGNED AND SEALED UNDER RULE 61G15-23.004, F.A.C.

PROJECT GENERAL NOTES:

1. THE CONTRACTOR SHOULD BE AWARE THAT "NO TOPOGRAPHIC SURVEY WAS PROVIDED FOR THIS PROJECT". THE EXISTING ROADWAY C CONDITIONS SHOWN IN THE PLANS WERE DEVELOPED USING AERIAL INFORMATION AND FIELD REVIEW INFORMATION AND MESUAREMENTS; THEREFORE, THERE MAY BE SMALL DISCREPANCIES REGARDING THE DATA PROVIDED FOR CONTRUCTION.
2. DELIVER AND UNLOAD REMOVED STREET SIGNS TO:
MIAMI-DADE COUNTY DEPT. OF TRANSPORTATION AND PUBLIC WORKS, TRAFFIC SIGNALS & SIGNS DIVISION
7100 NW 36TH ST, MIAMI, FL- 33166
3. ALL DRIVEWAY'S STOP BARS AND STOP SIGNS ARE TO REMIAN UNLESS INDICATED OTHERWISE.

TRAFFIC CONTROL PLANS NOTES:

LANE CLOSURE:
PERFORM LANE CLOSURES ONLY DURING NON-PEAK HOURS OR NON-EVENT DAYS/NIGHTS/WEEKENDS. NON-PEAK HOURS ARE FROM 9:00 AM TO 4:00 PM WEEKDAYS AND WEEKENDS.

ADVANCE CONSTRUCTION NOTICE:
THE CONTRACTOR SHALL FURNISH AND MAINTAIN PORTABLE CHANGING MESSAGE SIGNS (PCMS) AT EACH APPROACH TO THE WORK ZONE OUTSIDE THE CLEAR ZONE.

MESSAGES FOR THE PCMS SHALL BE AS INDICATED BELOW OR AS DIRECTED BY THE ENGINEER:
THE CONTRACTOR SHALL PROVIDE GENERAL INFORMATION SIGNS FOR THIS PROJECT AND LOCATE THEM APPROXIMATELY 500' IN ADVANCE OF THE FIRST ADVANCE WARNING SIGN OR AS CLOSE TO THE BEGINNING AND END OF THE CONSTRUCTION AND ON SIDE STREETS APPROACHING THE WORKZONE AS PRACTICAL IN ACCORDANCE WITH FDOT STANDARD PLANS INDEX 102-600, SHEET 5 OF 11.

TRAFFIC CONTROL PROJECT PHASE NOTES:

PHASE 1 CONSTRUCTION:

PLACE ALL TRAFFIC CONTROL DEVICES, TEMPORARY SIGNING AND PCMS NECESSARY TO CLOSE THE OUTSIDE LANE ADJACENT TO THE CONSTRUCTION ZONE IN ACCORDANCE TO THE CURRENT EDITION OF THE FDOT STANDARD PLANS, INDEXES NO. 102-613, 102-616. PLACE PCMS AS INDICATED ABOVE.

PERFORM MILLING & RESURFACING, PERFORM DRAINAGE WORK, REPLACE SIGNALIZATION LOOPS AND PLACE SIGNING AND PAVEMENT MARKING.

MAINTAIN ACCESS TO BUSINESSES USING FDOT STANDARD PLANS INDEXEX 102-600, 9 OF 11.

ADVANCE CONSTRUCTION NOTICE:

1. FURNISH AND MAINTAIN PORTABLE CHANGING MESSAGE SIGNS (PCMS) AT EACH APPROACH TO THE WORKZONE AND OUTSIDE THE CLEAR ZONE. MESSAGES FOR THE PCMS SHALL AS INDICATED BELOW OR AS DIRECTED BY THE ENGINEER.

STARING 2 WEEK PRIOR TO COMMENCEMENT OF CONSTRUCTION.

"ROAD NAME" CONST
BEGIN
"BEGIN DATE"
"WORKING HOURS"

"ROAD NAME" CONST
BEGIN
"BEGIN DATE"
"WORKING HOURS"

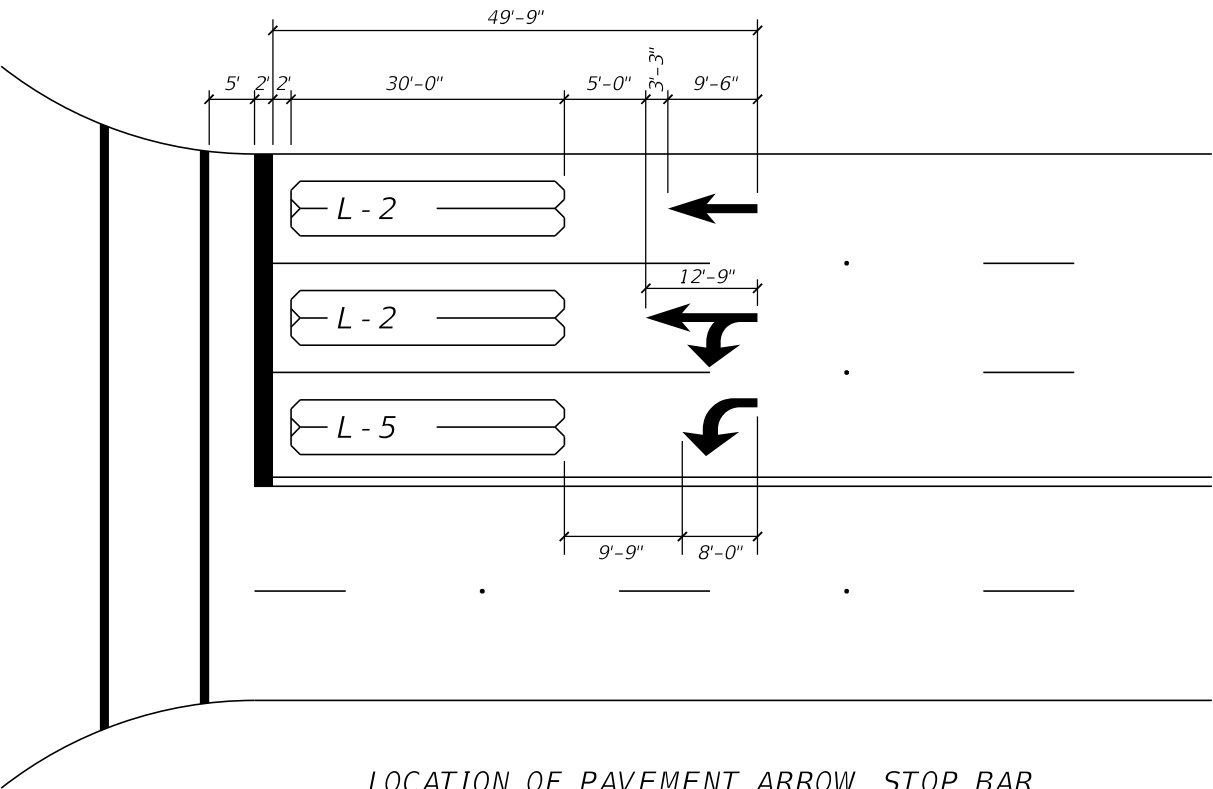
DURING CONSTRUCTION.

"ROAD NAME" CONST AHEAD
EXPECT DELAYS
"WORKING HOURS"

"ROAD NAME" CONST AHEAD
EXPECT DELAYS
"WORKING HOURS"

R/W NOTE:

ALL IMPROVEMENTS ARE TO BE CONSTRUCTED AND/OR INSTALLED WITHIN THE EXISTING STATE AND/OR LOCAL RIGHT OF WAY.



LOCATION OF PAVEMENT ARROW, STOP BAR AND LOOPS AT SIGNALIZED INTERSECTIONS
(NOTE: PAVEMENT ARROWS SHALL NOT OVERLAP LOOPS)
(N.T.S.)

2/5/2025 11:05:05 AM dlara C:\Worksets\FDOT\2024033.002\Roadway\Location # 3_IWW 33 ST\TB.dgn

REVISIONS			
DATE	DESCRIPTION	DATE	DESCRIPTION

MARLIN
ENGINEERING

RAFAEL A. LAGOS • P.E. No.: 51412
3363 W Commercial Blvd., Ste. 116 Ft Lauderdale, FL 33309
(954) 870-5050 • C.A. No. 6104



CITY OF DORAL

MILLING AND RESURFACING & SIGNING AND PAVEMENTS MARKINGS AT
NW 33th ST FROM NW 107 AVE TO NW 104 AVE

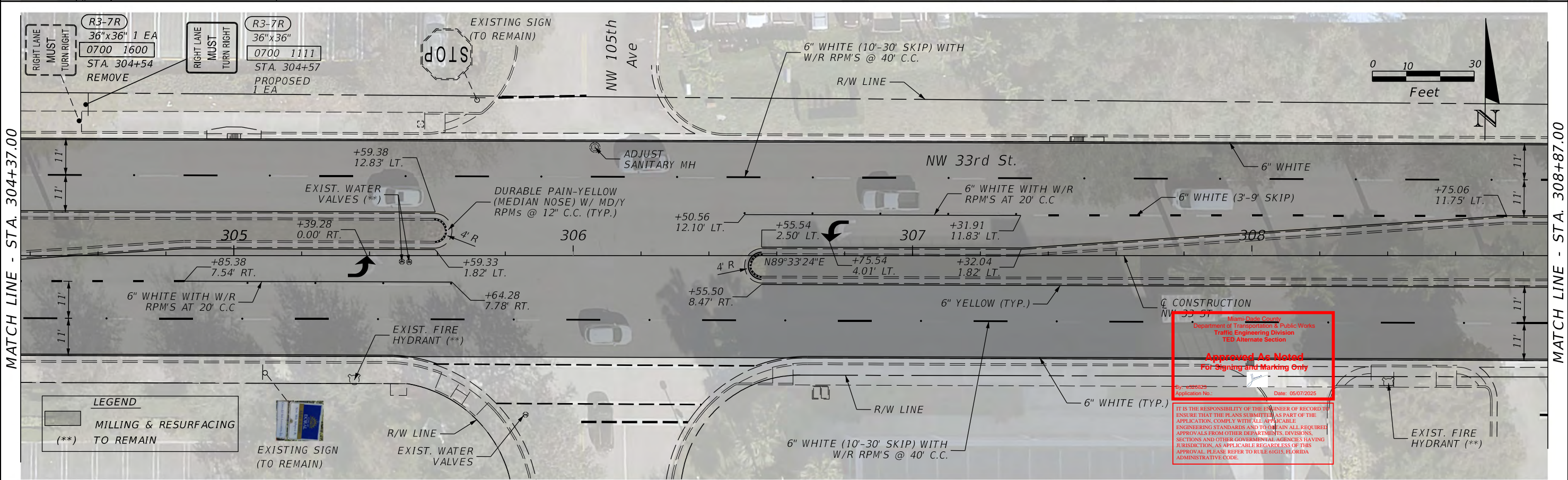
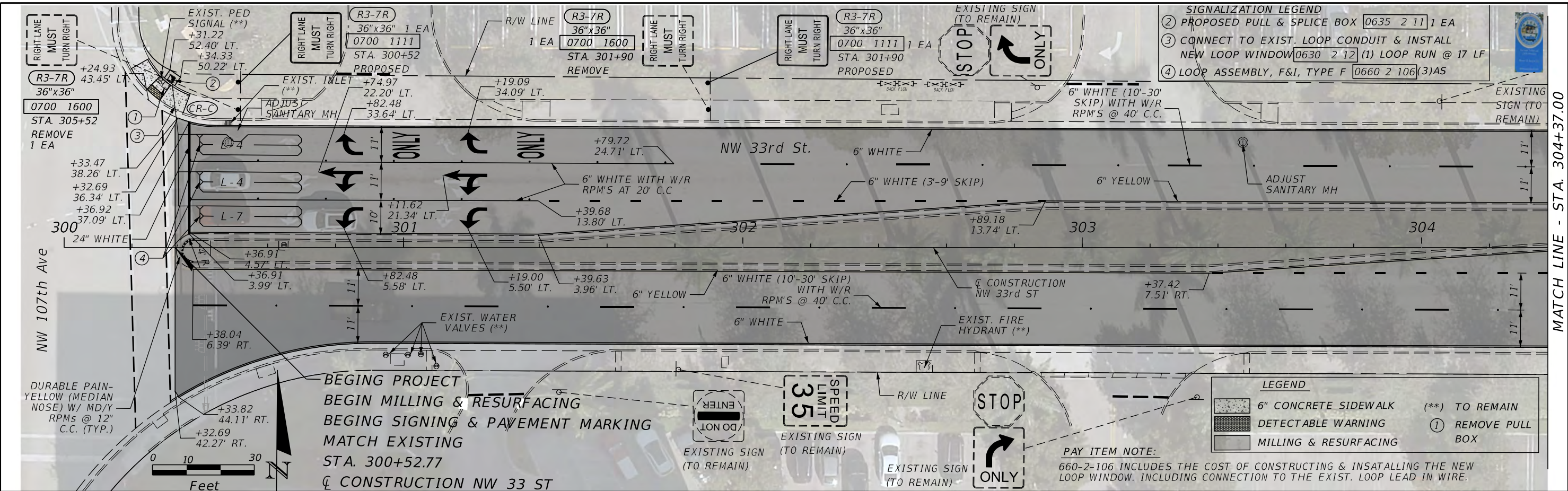
GENERAL NOTES

3

SHEET NO.

3

2/4/2025 4:50:44 PM dlara
C:\Worksets\FDOT\2024033.002\Roadway\Location #3_NW 33 ST\TB.dgn

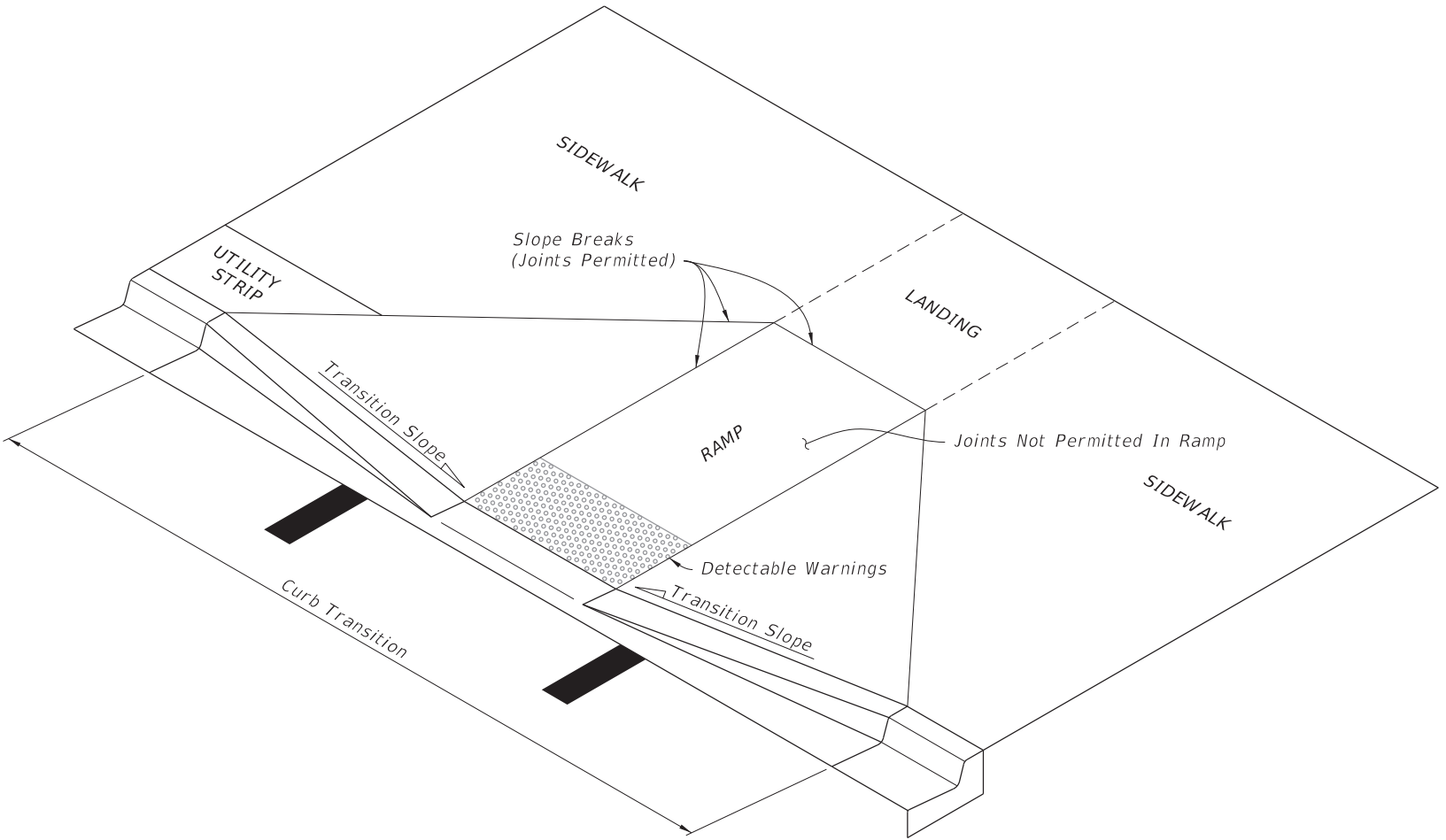


REVISIONS				MARLIN ENGINEERING		CITY OF DORAL MILLING AND RESURFACING & SIGNING AND PAVEMENTS MARKINGS AT NW 33th ST FROM NW 107 AVE TO NW 104 AVE	PLAN SHEET	SHEET NO.	
DATE	DESCRIPTION	DATE	DESCRIPTION					4	
				RAFAEL A. LAGOS • P.E. No.: 51412 3363 W Commercial Blvd., Ste. 116 Ft Lauderdale, FL 33309 (954) 870-5050 • C.A. No. 6104					

THE OFFICIAL RECORD OF THIS SHEET IS THE ELECTRONIC FILE DIGITALLY SIGNED AND SEALED UNDER RULE 61G15-23.004, F.A.C.

GENERAL NOTES:

1. Cross Slopes and Grades:
- A. Sidewalk, ramp, and landing slopes (i.e. 0.02, 0.05, and 1:12) shown in this Index are maximums. With approval of the Engineer, provide the minimum feasible slope where the requirements cannot be met.
 - B. Landings must have cross-slopes less than or equal to 0.02 in any direction.
 - C. Maintain a single longitudinal slope along each side of the curb ramp. Ramp slopes are not required to exceed 15 feet in length.
 - D. Joints permitted at the location of Slope Breaks. Otherwise locate joints in accordance with Index 522-001. No joints are permitted within the ramp portion of the Curb Ramp.
2. Curb, Curb and Gutter and/or Sidewalk:
- A. Refer to Index 522-001 for concrete thickness and sidewalk details.
 - B. Remove any existing curb, curb and gutter, or sidewalk to the nearest joint beyond the curb transition or to the extent that no remaining section is less than 5 feet long.
 - C. Width of Curb Ramp is 4'-0" minimum. Match sidewalk or Shared Use Path width as shown in the Plans.
3. Curb Ramp Alpha-Identification:
- A. Sidewalk curb ramp alpha-identifications (e.g. CR-A) are provided for reference purposes in the Plans.
 - B. Alpha-identifications CR-I and CR-J are intentionally omitted.
4. Detectable Warnings:
- A. Install detectable warnings in accordance with Specification 527.
 - B. Place detectable warnings across the full width of the ramp or landing, to a minimum depth of 2 feet measured perpendicular to the curb line and no greater than 5 feet from the back of the curb or edge of pavement.
 - C. If detectable warnings are shown in the Plans on slopes greater than 5%, align the truncated domes with the centerline of the ramp; otherwise, the truncated domes are not required to be aligned.

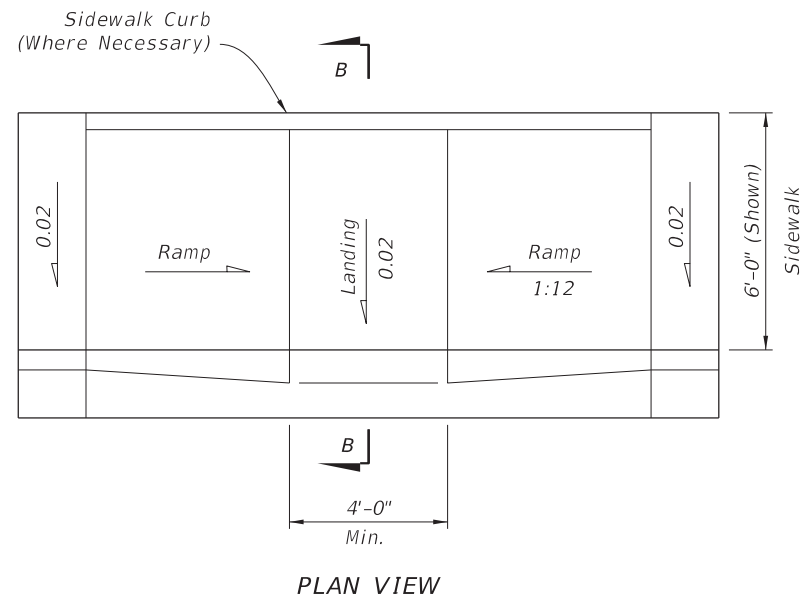


CURB RAMP NOMENCLATURE

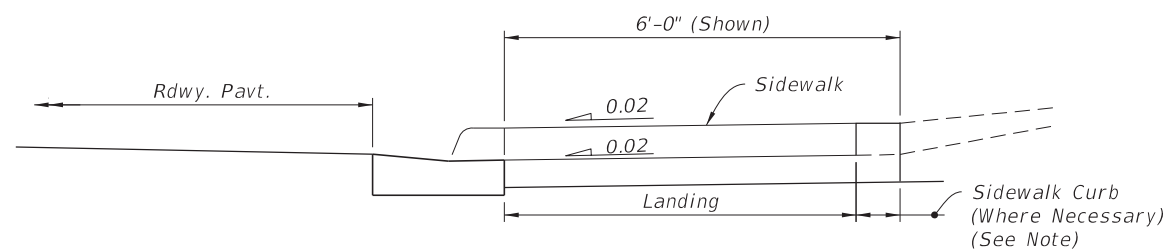
9/10/2024 1:39:30 PM

LAST REVISION 11/01/21	REVISION	DESCRIPTION:	 FY 2025-26 STANDARD PLANS	DETECTABLE WARNINGS AND SIDEWALK CURB RAMPS	INDEX 522-002	SHEET 1 of 7
------------------------------	----------	--------------	--	---	------------------	-----------------

9/10/2024 1:39:43 PM

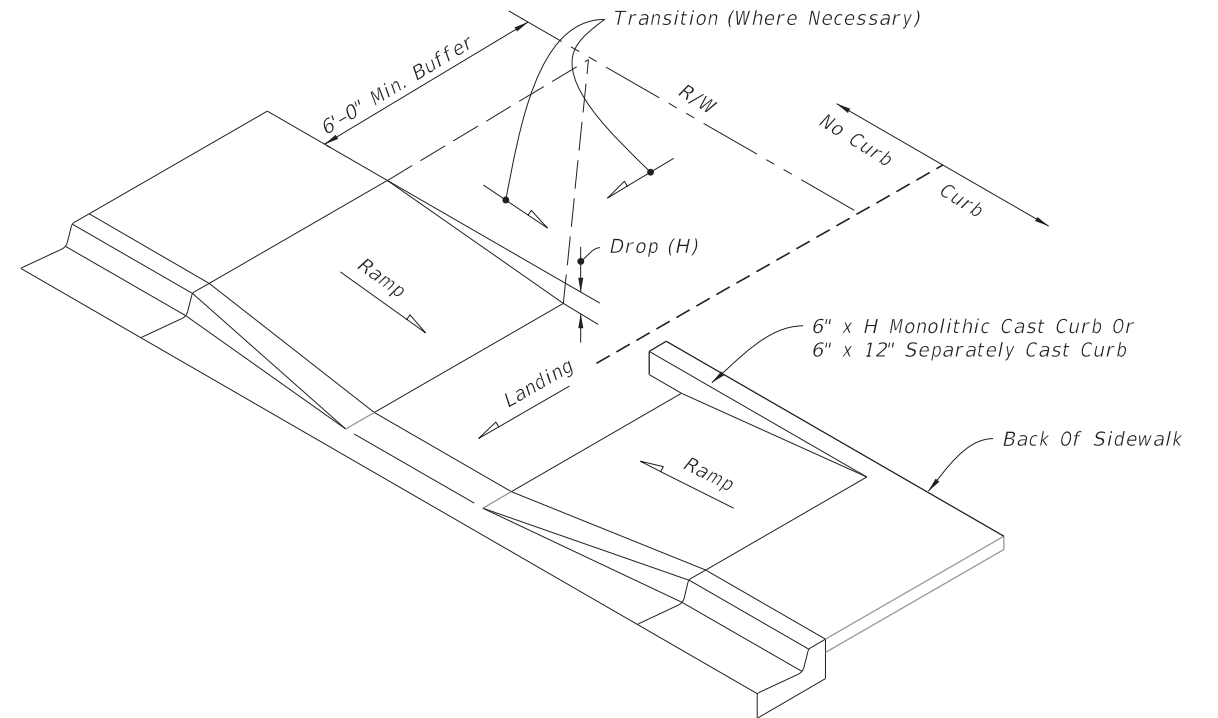


CR-C

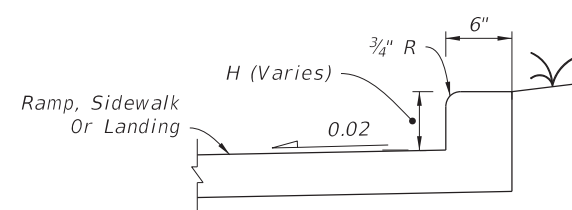


NOTE: For additional information on sidewalk curb construction, see SIDEWALK CURB OPTIONS details.

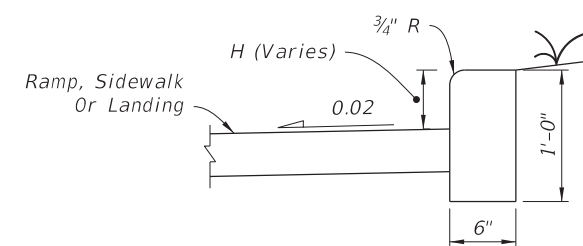
SECTION B-B



CONSTRUCTION OF SIDEWALK CURB IN CUT SECTIONS



MONOLITHIC CAST CURB



SEPARATELY CAST CURB

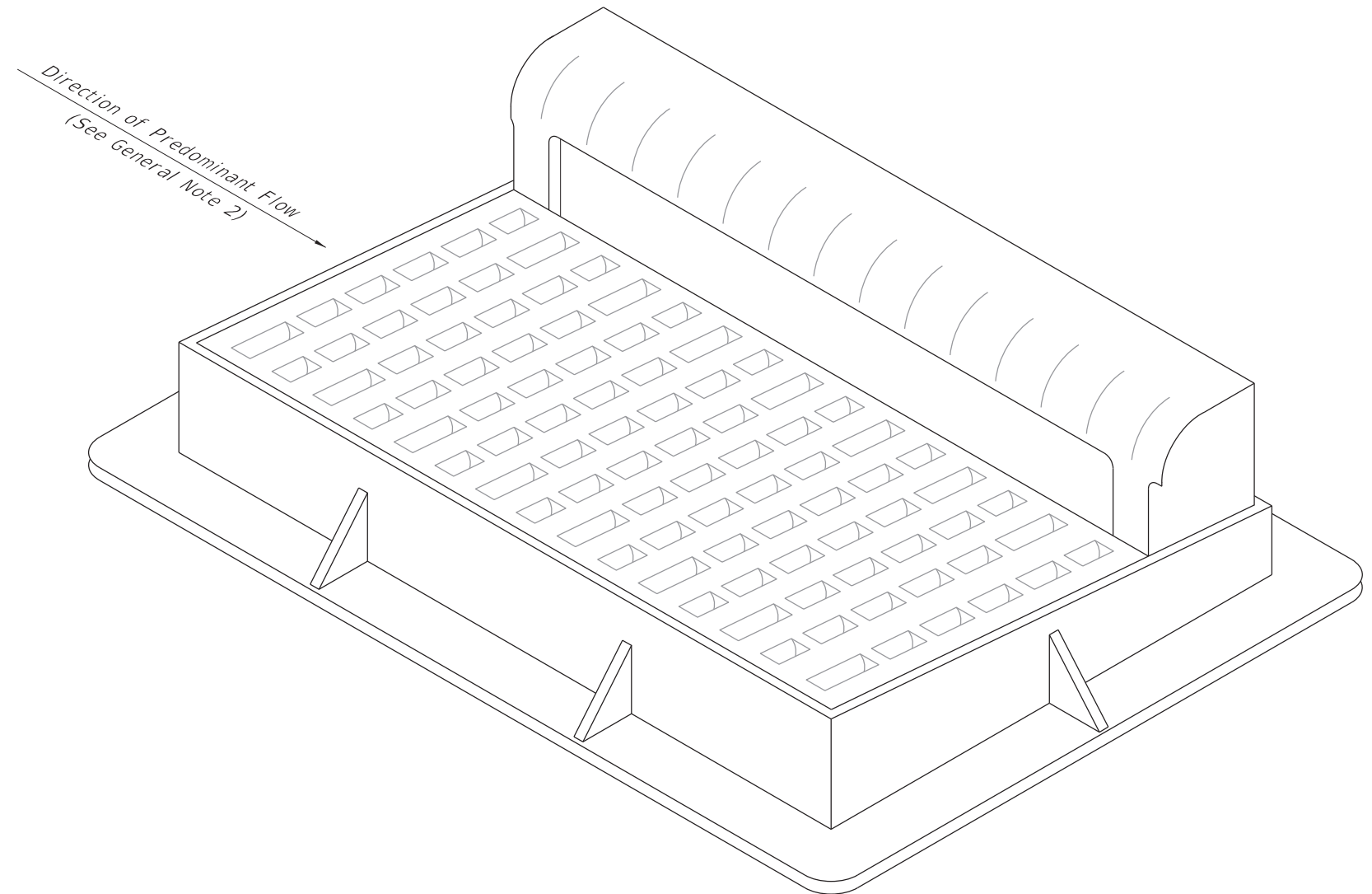
SIDEWALK CURB OPTIONS

SIDEWALK CURB RAMPS CR-C AND SIDEWALK CURB

LAST REVISION 11/01/20	REVISION	DESCRIPTION:	 FY 2025-26 STANDARD PLANS	DETECTABLE WARNINGS AND SIDEWALK CURB RAMPS	INDEX 522-002	SHEET 3 of 7
------------------------------	----------	--------------	--	---	------------------	-----------------

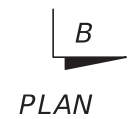
GENERAL NOTES:

1. *Work this Index with Index 425-001 and Index 425-010.*
2. *Orient grate with vanes directed toward predominant flow.*
3. *Provide 1¼" minimum cover for steel in slab tops unless otherwise shown. Tops may be either cast-in-place or precast concrete.*
4. *Place top slab openings such that 2 edges of inlet frame will be located directly above bottom wall or riser wall for Alternate B applications.*
5. *When used on a structure with dimensions larger than those detailed on Sheet 3 and risers are not applied, construct the top slab using Index 425-010 with the slab opening adjusted to 24"x36". The "Special Top Slab" on Index 425-010 is not permitted.*
6. *Frame may be adjusted with one to six courses of brick.*
7. *Vaned grates with approximately equal openings that satisfy AASHTO HL-93 loading are permitted. Provide reversible (right or left) grates.*



= CURB INLET TOP TYPE 9 =

TABLE OF CONTENTS:	
Sheet	Description
1	General Notes and Contents
2	Frame and Grate Details
3	Top Slab Details

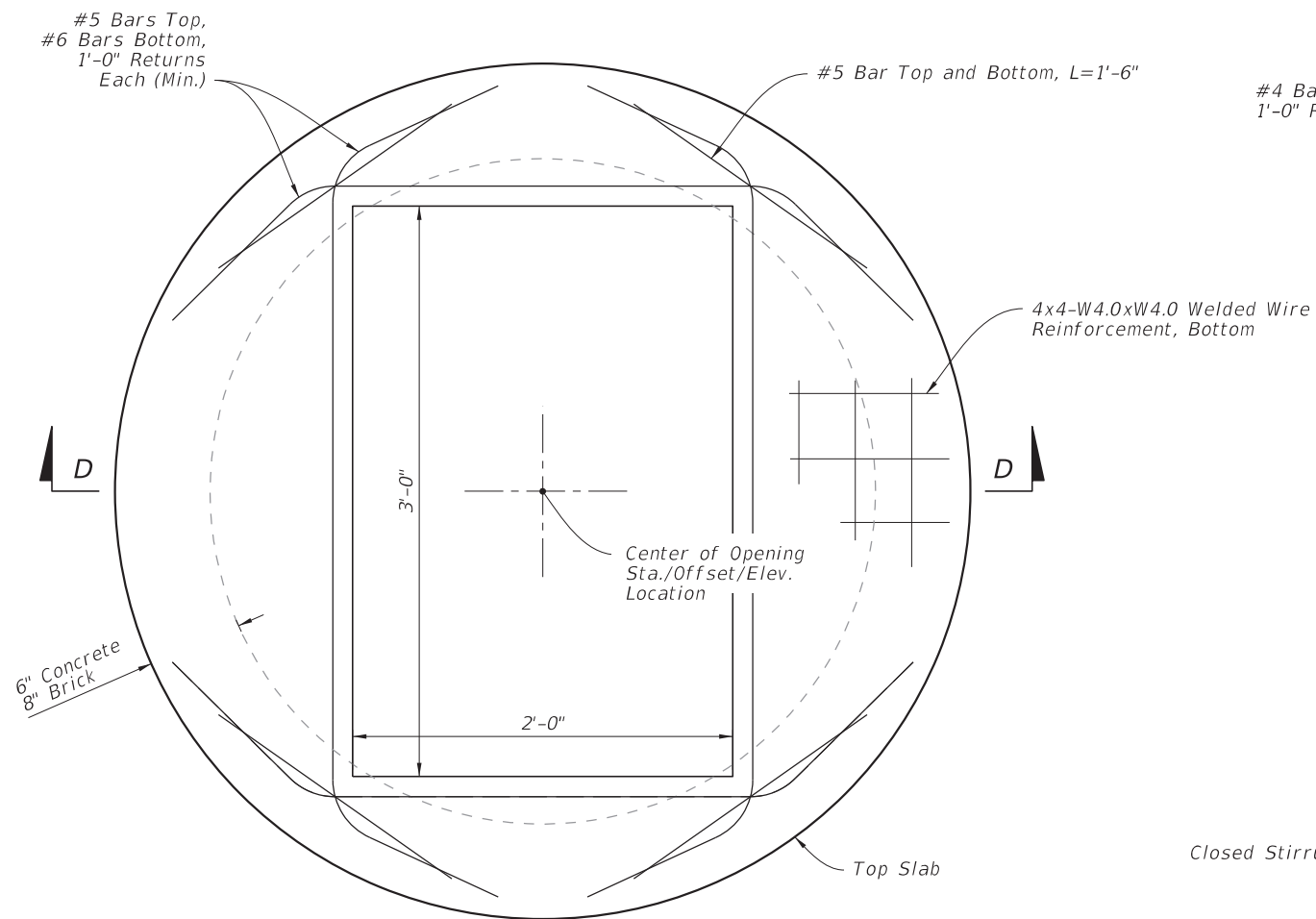


— GRATE DETAILS

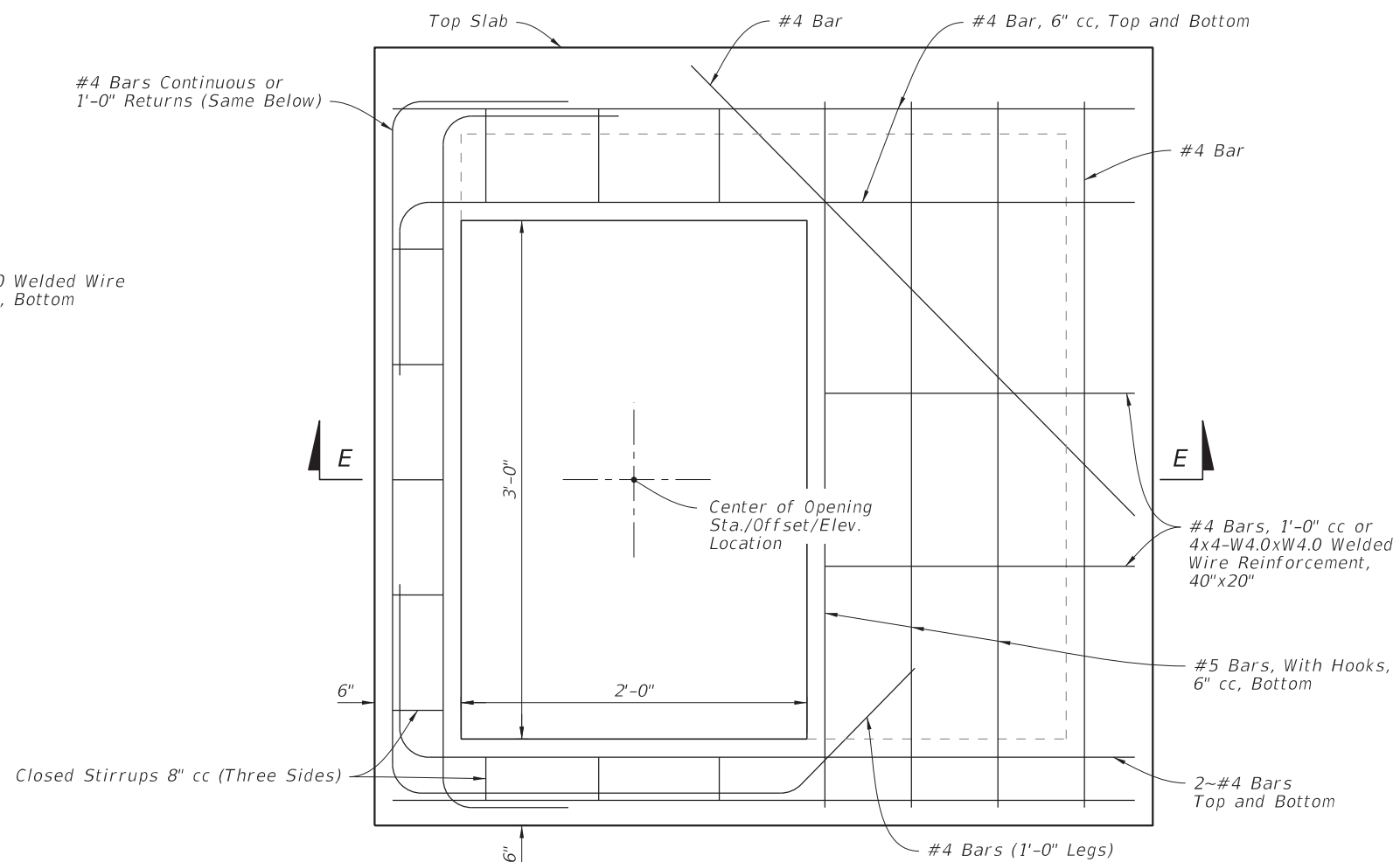


FRAME AND GRATE DETAILS

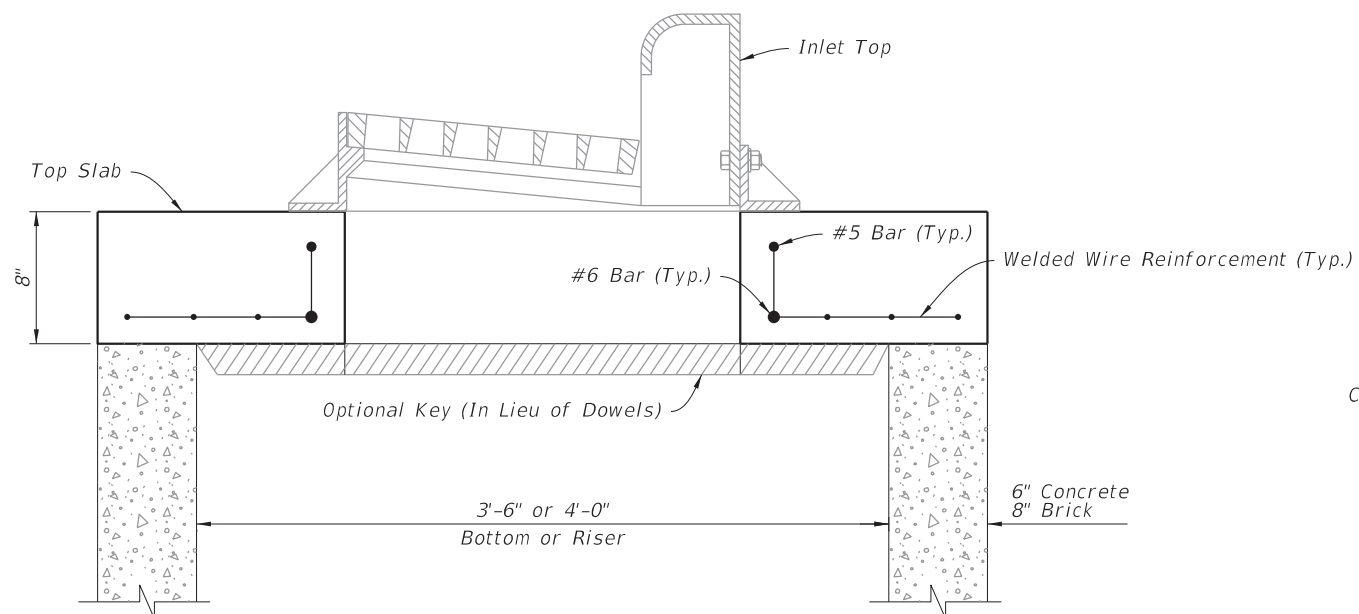
FRAME AND GRATE DETAILS



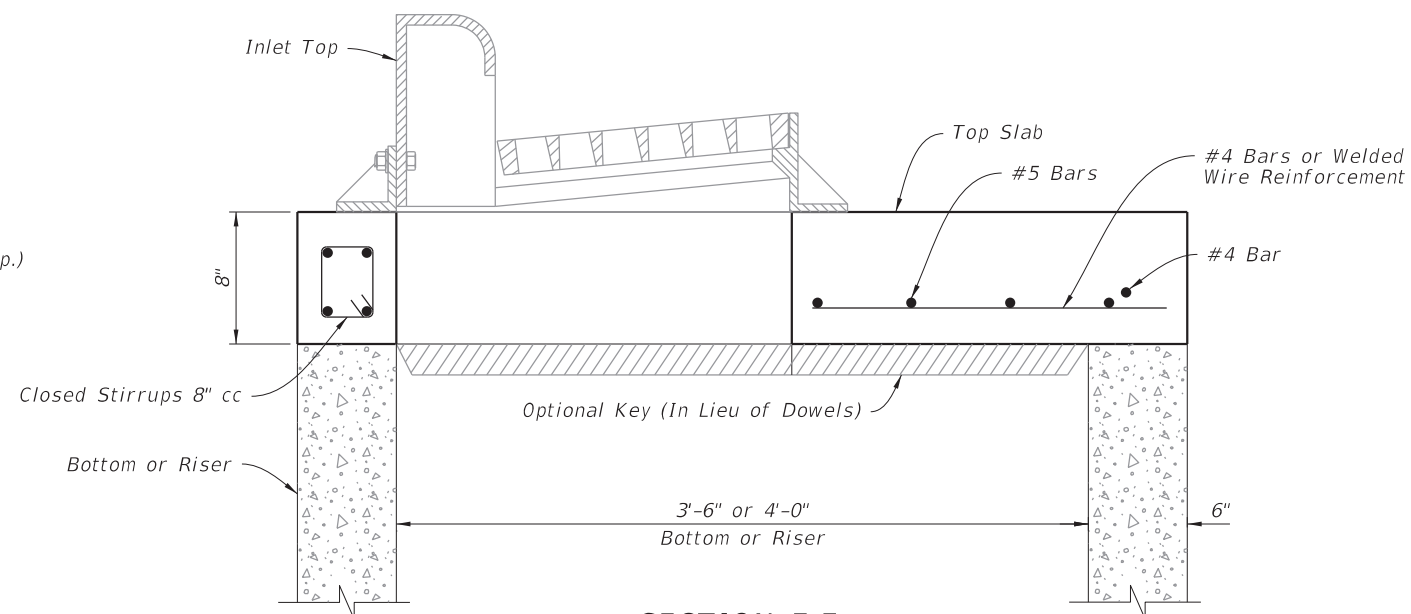
PLAN



PLAN




SECTION D-D



SECTION E-E

TOP SLAB DETAILS

LAST REVISION 11/01/20	REVISION	DESCRIPTION:		FY 2025-26 STANDARD PLANS	CURB INLET TYPE 9	INDEX 425-024	SHEET 3 of 3
------------------------------	----------	--------------	---	------------------------------	-------------------	------------------	-----------------

9/10/2024 11:34:22 AM