

11/27/2024 10:53:34 AM d:\ara C:\Worksets\FDOT_2024033\002_Roadway\Location #1_NW 13th Terrace\KEY\SDD01.dgn

COMPONENTS OF CONTRACT PLANS SET

MILLING & RESURFACING & PAVEMENT MARKINGS
AT NW 13th TERR. FROM 89th CT TO 87th AVE.

INDEX OF ROADWAY PLANS

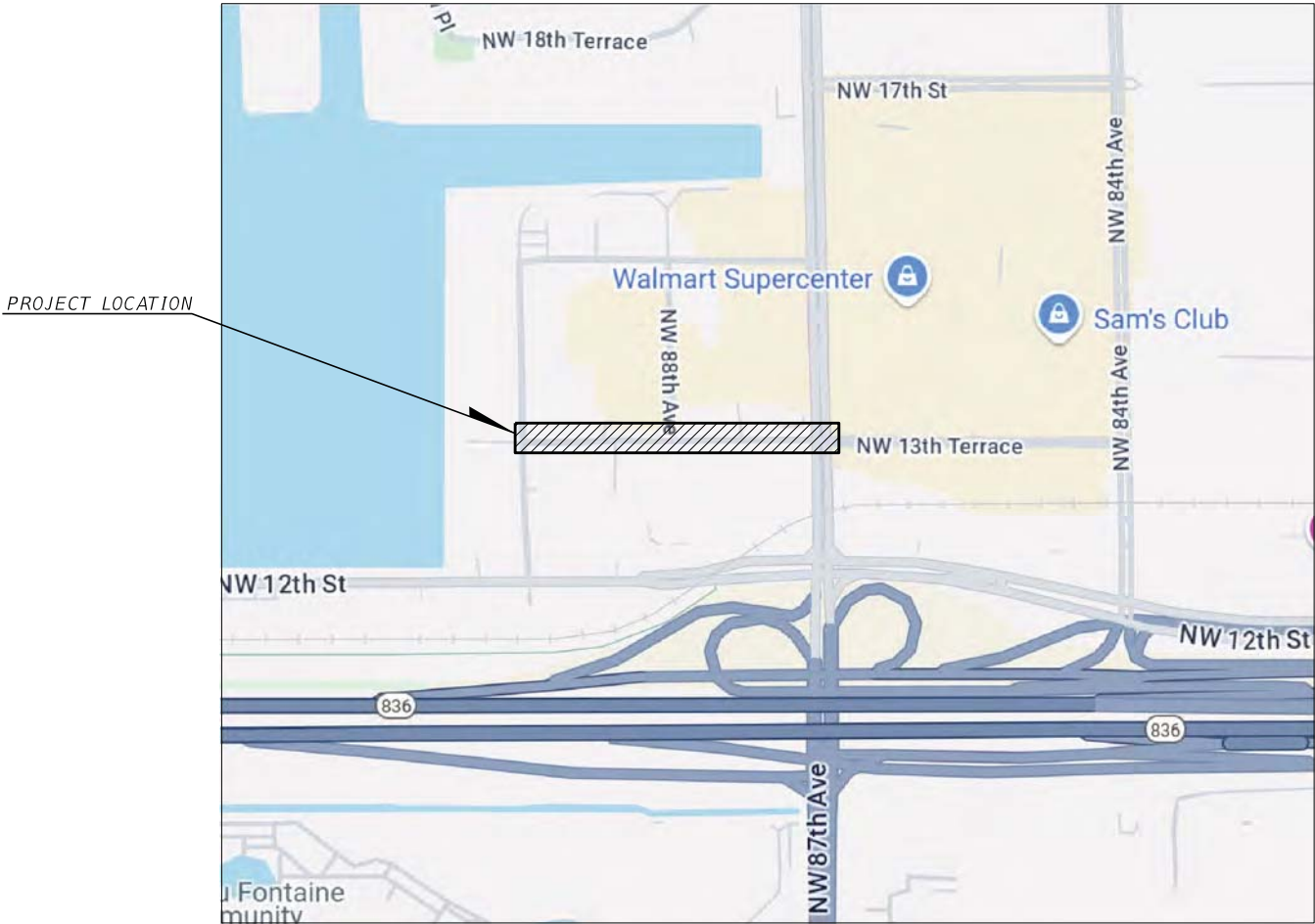
SHEET NO.	SHEET DESCRIPTION
1	KEY SHEET
2	SUMMARY OF QUANTITIES
3	GENERAL NOTES AND DETAILS
4 TO 5	PLAN SHEET

THESE PLANS HAVE BEN PREPARED IN ACCORDANCE WITH AND ARE GOVERNED BY THE CITY OF DORAL STANDARDS, MIAMI-DADE COUNTY PUBLIC WORKS DEPARTMENT STANDARDS AND SPECIFICATIONS PART 1, 2 AND 3, THE MANUAL OF MINIMUM STANDARDS FOR DESIGN, CONSTRUCTION AND MAINTENANCE FOR STREETS AND HIGHWAYS, THE FLORIDA DEPARTMENT OF TRANSPORTATION FY 2024-2025 STANDARD PLANS AND STANDARD SPECIFICATIONS FOR ROAD AND BRIDGE CONSTRUCTION DATED 2024-25, AS AMENDED BY THE CONTRACT DOCUMENTS.

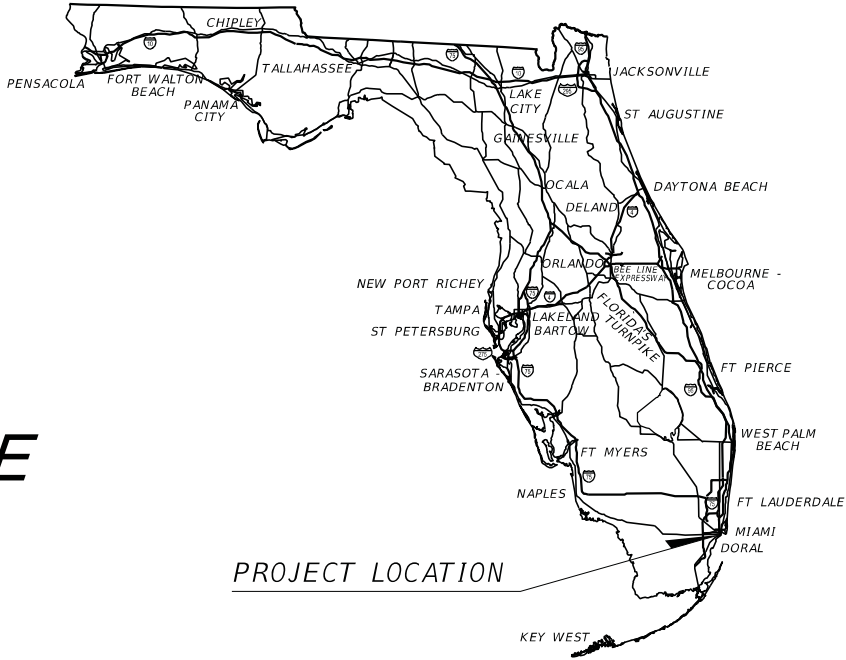
CONTRACT PLANS



MILLING & RESURFACING &
PAVEMENT MARKINGS AT
NW 13th TERR FROM 89th CT TO 87th AVE
CITY OF DORAL
MIAMI-DADE COUNTY



LOCATION MAP



PROJECT LOCATION

PREPARED FOR
CITY OF DORAL
PUBLIC WORKS DEPARTMENT
8401 NW 53RD TERRACE, 2ND FLOOR
DORAL, FLORIDA 33166

ROADWAY SHOP DRAWINGS
TO BE SUBMITTED TO:

RAFAEL A. LAGOS, P.E.
P.E. LICENSE NUMBER 51412
MARLIN ENGINEERING, INC.
3363 W COMMERCIAL BLVD. - SUITE 115
FT. LAUDERDALE, FLORIDA 33309

THIS ITEM HAS BEEN DIGITALLY
SIGNED AND SEALED BY

Rafael A Lagos Date: 2024.12.04 15:55:19 -05'00'

ON THE DATE ADJACENT TO THE SEAL

PRINTED COPIES OF THIS DOCUMENT ARE
NOT CONSIDERED SIGNED AND SEALED
AND THE SIGNATURE MUST BE VERIFIED
ON ANY ELECTRONIC COPIES.

ROADWAY PLANS
ENGINEER OF RECORD:

RAFAEL A. LAGOS, P.E.
P.E. LICENSE NUMBER 51412
MARLIN ENGINEERING, INC.
3363 W COMMERCIAL BLVD. - SUITE 115
FT. LAUDERDALE, FLORIDA 33309

PLANS PREPARED BY:

MARLIN
ENGINEERING
3363 W COMMERCIAL BLVD. - SUITE 115
FT. LAUDERDALE, FLORIDA 33309

CITY COUNCIL

MAYOR
CHRISTI FRAGA

VICE MAYOR
OSCAR PUIG-CORVE

COUNCILMAN
RAFAEL PINEYRO

COUNCILWOMAN
MAUREEN PORRAS

COUNCILWOMAN
DIGNA CABRAL

FISCAL YEAR	SHEET NO.
2025	1

12/3/2024 3:49:44 PM dlara
C:\Worksets\FDOT\2024033.002\Roadway\Location # 1_NW 13th Terrace\TB.dgn

SUMMARY OF QUANTITIES (ROADWAY)				
PAY ITEM NO.	DESCRIPTION	UNIT	COMPONENT	
			ROADWAY	
			PLAN	FINAL
0101 1	MOBILIZATION	LS	1	
0102 1	MAINTENANCE OF TRAFFIC	LS/DA	1/60	
0104 18	INLET PROTECTION SYSTEM	EA	13	
0110 1 1	CLEARING & GRUBBING	AC	0.01	
0110 4 10	REMOVAL OF EXISTING CONCRETE	SY	4	
0120 1	REGULAR EXCAVATION	CY	3.7	
0285704	OPTIONAL BASE, BASE GROUP 04 (6")	SY	19	
0327 70 1	MILLING EXISTING ASPHALT PAVEMENT, 1" AVG DEPTH	SY	5,987	
0337 7 82	ASPHALT CONCRETE FRICTION COURSE, TRAFFIC C, FC-9.5, PG 76-22	TN	239.3	
0520 2 4	CONCRETE CURB, TYPE D	LF	99	
0522 2	CONCRETE SIDEWALK AND DRIVEWAYS, 6" THICK	SY	4	
0570 1 2	PERFORMANCE TURF, SOD	SY	22	
0425 5	MANHOLE, ADJUST	EA	6	
0425 6	VALVE BOXES, ADJUST	EA	6	

SUMMARY OF QUANTITIES (SIGNALIZATION)				
PAY ITEM NO.	DESCRIPTION	UNIT	COMPONENT	
			SIGNALIZATION	
			PLAN	FINAL
0635 2 11	PULL & SPLICE BOX, F&I, 13" x 24" COVER SIZE	EA	1	
0660 2106	LOOP ASSEMBLY, F&I, TYPE F	AS	4	

SUMMARY OF QUANTITIES (SIGNING & PAVEMENT MARKING)				
PAY ITEM NO.	DESCRIPTION	UNIT	COMPONENT	
			SPM	
			PLAN	FINAL
0706 1 3	RAISED PAVEMENT MARKER, TYPE B	EA	292	
0710 11101	PAINTED PAVEMENT MARKINGS, STANDARD, WHITE, SOLID, 6"	GM	0.085	
0710 11125	PAINTED PAVEMENT MARKINGS, STANDARD, WHITE, SOLID FOR STOP LINE OR CROSSWALK, 24"	LF	47	
0710 11160	PAINTED PAVEMENT MARKINGS, STANDARD, WHITE, MESSAGE OR SYMBOL	EA	3	
0710 11170	PAINTED PAVEMENT MARKINGS, STANDARD, WHITE, ARROWS	EA	8	
0710 11201	PAINTED PAVEMENT MARKINGS, STANDARD, YELLOW, SOLID, 6"	GM	0.702	
0710 11224	PAINTED PAVEMENT MARKINGS, STANDARD, YELLOW, SOLID FOR DIAGONAL OR CHEVRON, 18"	LF	492	
0710 11231	PAINTED PAVEMENT MARKINGS, STANDARD, YELLOW, SKIP, 6"	GM	0.102	
0711 11125	THERMOPLASTIC, STANDARD, WHITE, SOLID, 24" FOR STOP LINE AND CROSSWALK	LF	47	
0711 11160	THERMOPLASTIC, STANDARD, WHITE, MESSAGE OR SYMBOL	EA	3	
0711 11170	THERMOPLASTIC, STANDARD, WHITE, ARROW	EA	8	
0711 11224	THERMOPLASTIC, STANDARD, YELLOW, SOLID, 18 FOR DIAGONAL OR CHEVRONS	LF	492	
0711 16101	THERMOPLASTIC, STANDARD, OTHER SURFACES, WHITE, SOLID, 6	GM	0.085	
0711 16201	THERMOPLASTIC, STANDARD, OTHER SURFACES, YELLOW, SOLID, 6"	GM	0.702	
0711 16231	THERMOPLASTIC, OTHER SURFACES, YELLOW, SKIP, 6	GM	0.102	

REVISIONS			
DATE	DESCRIPTION	DATE	DESCRIPTION



RAFAEL A. LAGOS • P.E. No.: 51412
3363 W Commercial Blvd., Ste. 116 Ft Lauderdale, FL 33309
(954) 870-5050 • C.A. No. 6104



CITY OF DORAL
MILLING & RESURFACING &
PAVEMENTS MARKINGS AT
NW 13th TERR FROM 89th CT TO 87th AVE.

SUMMARY OF QUANTITIES	SHEET NO.
	2

THE OFFICIAL RECORD OF THIS SHEET IS THE ELECTRONIC FILE DIGITALLY SIGNED AND SEALED UNDER RULE 61G15-23.004, F.A.C.

PROJECT GENERAL NOTES:

1. DELIVER AND UNLOAD REMOVED STREET SIGNS TO:
MIAMI-DADE COUNTY DEPT. OF TRANSPORTATION AND PUBLIC WORKS, TRAFFIC SIGNALS & SIGNS DIVISION
7100 NW 36TH ST, MIAMI, FL- 33166
2. ALL DRIVEWAY'S STOP BARS AND STOP SIGNS ARE TO REMIAN UNLESS INDICATED OTHERWISE.

TRAFFIC CONTROL PLANS NOTES:

LANE CLOSURE:
PERFORM LANE CLOSURES ONLY DURING NON-PEAK HOURS OR NON-EVENT DAYS/NIGHTS/WEEKENDS. NON-PEAK HOURS ARE FROM 9:00 AM TO 4:00 PM WEEKDAYS AND WEEKENDS.

ADVANCE CONSTRUCTION NOTICE:
THE CONTRACTOR SHALL FURNISH AND MAINTAIN PORTABLE CHANGING MESSAGE SIGNS (PCMS) AT EACH APPROACH TO THE WORK ZONE OUTSIDE THE CLEAR ZONE.

MESSAGES FOR THE PCMS SHALL BE AS INDICATED BELOW OR AS DIRECTED BY THE ENGINEER:
THE CONTRACTOR SHALL PROVIDE GENERAL INFORMATION SIGNS FOR THIS PROJECT AND LOCATE THEM APPROXIMATELY 500' IN ADVANCE OF THE FIRST ADVANCE WARNING SIGN OR AS CLOSE TO THE BEGINNING AND END OF THE CONSTRUCTION AND ON SIDE STREETS APPROACHING THE WORKZONE AS PRACTICAL IN ACCORDANCE WITH FDOT STANDARD PLANS INDEX 102-600, SHEET 5 OF 11.

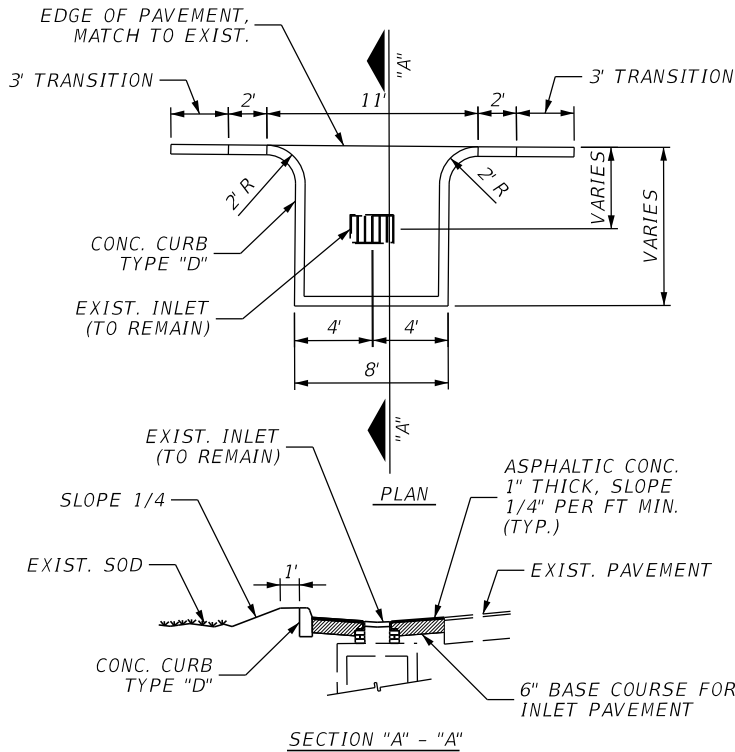
TRAFFIC CONTROL PROJECT PHASE NOTES:

PHASE 1 CONSTRUCTION:

PLACE ALL TRAFFIC CONTROL DEVICES, TEMPORARY SIGNING AND PCMS NECESSARY TO CLOSE THE OUTSIDE LANE ADJACENT TO THE CONSTRUCTION ZONE IN ACCORDANCE TO THE CURRRENT EDITION OF THE FDOT STANDARD PLANS, INDEXES NO. 102-613, 102-616.
PLACE PCMS AS INDICATED ABOVE.

PERFORM MILLING & RESURFACING, REPLACES SIGNALIZATION LOOPS, CONSTRUCT APRONS AND REPLACE PAVEMENT MARKING.

MAINTAIN ACCESS TO BUSINESSES USING FDOT STANDARD PLANS INDEXEX 102-600, 9 OF 11.



ASPHLAT APRON DETAIL
N.T.S.

ADVANCE CONSTRUCTION NOTICE:

1. FURNISH AND MAINTAIN PORTABLE CHANGING MESSAGE SIGNS (PCMS) AT EACH APPROACH TO THE WORKZONE AND OUTSIDE THE CLEAR ZONE.
MESSAGES FOR THE PCMS SHALL AS INDICATED BELOW OR AS DIRECTED BY THE ENGINEER.

STARING 2 WEEK PRIOR TO
COMMENCEMENT OF CONSTRUCTION.

DURING CONSTRUCTION.

"ROAD NAME"
CONST
BEGIN
"BEGIN DATE"
"WORKING HOURS"

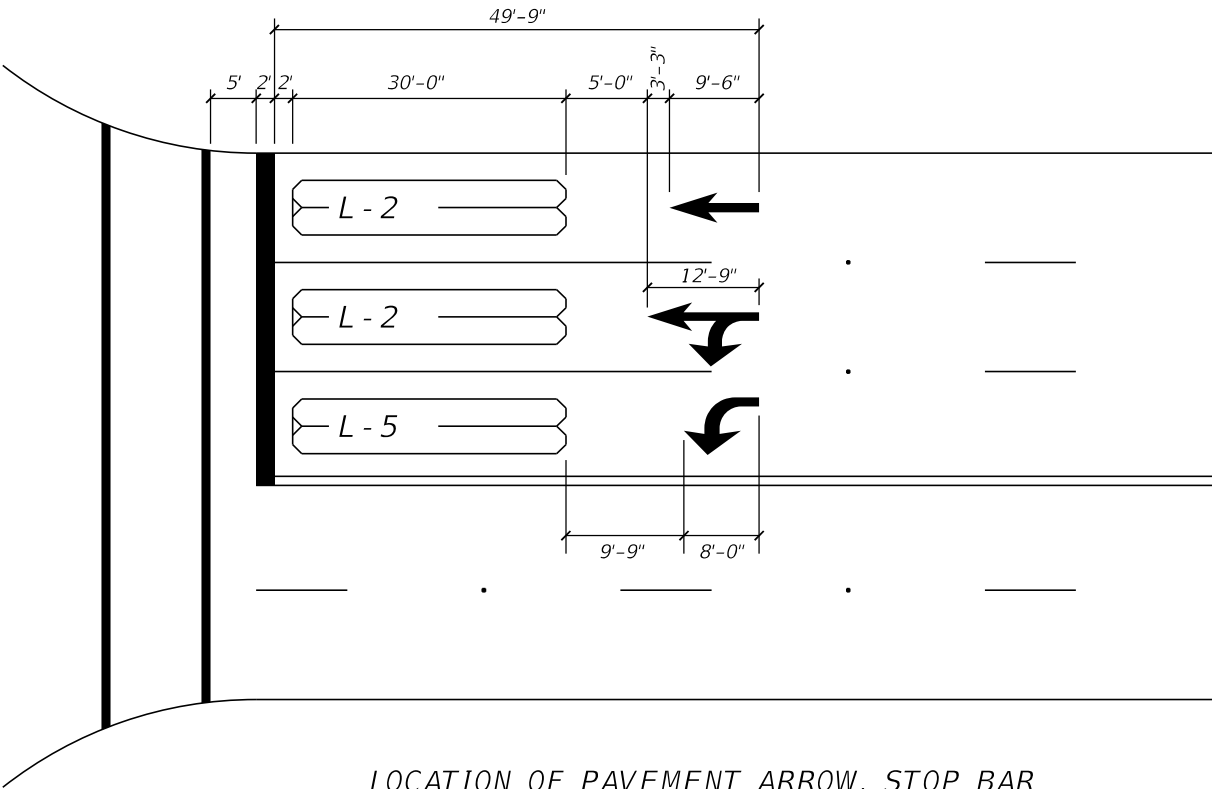
"ROAD NAME"
CONST
BEGIN
"BEGIN DATE"
"WORKING HOURS"

"ROAD NAME"
CONST
AHEAD
EXPECT
DELAYS
"WORKING HOURS"

"ROAD NAME"
CONST
AHEAD
EXPECT
DELAYS
"WORKING HOURS"

R/W NOTE:

ALL IMPROVEMENTS ARE TO BE CONSTRUCTED AND/OR INSTALLED WITHIN THE EXISTING STATE AND/OR LOCAL RIGHT OF WAY.



LOCATION OF PAVEMENT ARROW, STOP BAR
AND LOOPS AT SIGNALIZED INTERSECTIONS

(NOTE: PAVEMENT ARROWS SHALL NOT OVERLAP LOOPS)
(N.T.S.)

12/4/2024 1:29:57 PM dlara
C:\Worksets\FDOT\2024033.002\Roadway\Location # 1_NW 13th Terrace\TB.dgn

REVISIONS			
DATE	DESCRIPTION	DATE	DESCRIPTION

MARLIN
ENGINEERING

RAFAEL A. LAGOS • P.E. No.: 51412
3363 W Commercial Blvd., Ste. 116 Ft Lauderdale, FL 33309
(954) 870-5050 • C.A. No. 6104



CITY OF DORAL
MILLING & RESURFACING &
PAVEMENTS MARKINGS AT
NW 13th TERR FROM 89th CT TO 87th AVE.

GENERAL NOTES
AND DETAILS

SHEET
NO.
3

